

2020

SINCE 1903  
*Forsyth*  
shirtmaker chemisier

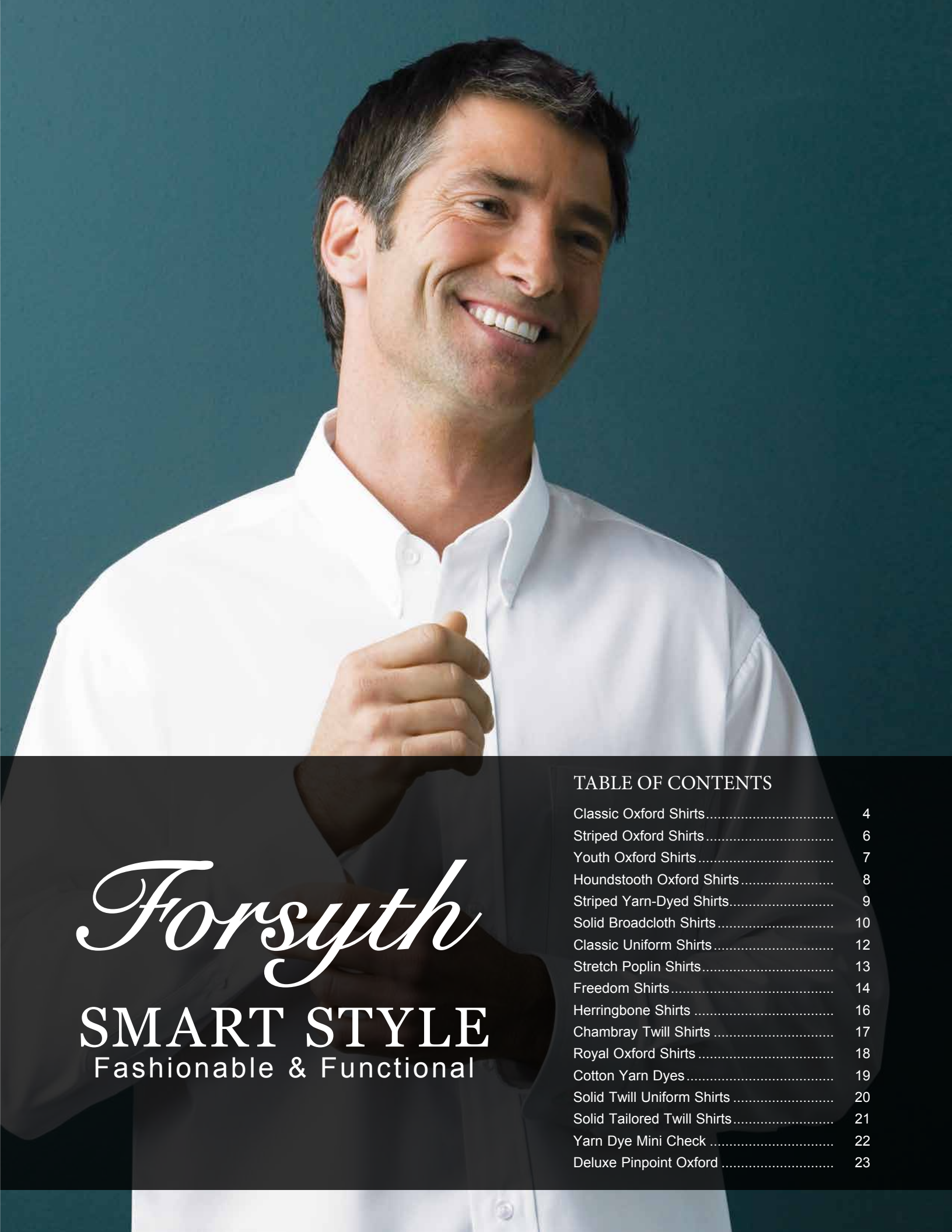
THE JOHN FORSYTH SHIRT COMPANY INC.



When John Forsyth started making shirts in the small town of Kitchener, Ontario, Canada, in 1903, he created a tradition of quality and craftsmanship marked by his personal guarantee. After over 100 years, Forsyth is still Canada's premier fine shirt maker.

To this day, we remain faithful to the time honored practices that go into making shirts of unparalleled quality and caring workmanship. From expertly tailored dress shirts to hard working performance-driven wovens, at John Forsyth we bring you exactly what you need for today's corporate and casual work environments.





*Forsyth*

SMART STYLE

Fashionable & Functional

TABLE OF CONTENTS

Classic Oxford Shirts.....	4
Striped Oxford Shirts.....	6
Youth Oxford Shirts.....	7
Houndstooth Oxford Shirts.....	8
Striped Yarn-Dyed Shirts.....	9
Solid Broadcloth Shirts.....	10
Classic Uniform Shirts.....	12
Stretch Poplin Shirts.....	13
Freedom Shirts.....	14
Herringbone Shirts.....	16
Chambray Twill Shirts.....	17
Royal Oxford Shirts.....	18
Cotton Yarn Dyes.....	19
Solid Twill Uniform Shirts.....	20
Solid Tailored Twill Shirts.....	21
Yarn Dye Mini Check.....	22
Deluxe Pinpoint Oxford.....	23

(FRB)

(WHT)

# CLASSIC OXFORDS

*Expertly tailored  
and easy care*





Made in Canada

Classic Oxford Dress

Style #	Description	Men's or Ladies' Sizes
C100	Men's Short Sleeve Classic Oxford Dress	14 – 21" ^
C100T	Men's Tall Short Sleeve Classic Oxford Dress	15.5 – 18.5"
C101	Men's Long Sleeve Classic Oxford Dress, 33" / 35" / 37" Sleeve	14 – 21" ^
C102	Ladies' Short Sleeve Classic Oxford Dress	XS – 2XL
C103	Ladies' Long Sleeve Classic Oxford Dress	XS – 2XL

Two Pocket Classic Oxford Dress

Style #	Description	Men's or Ladies' Sizes
C1002P	Men's Short Sleeve Two-Pocket Classic Oxford in French Blue (FRB)	14 – 21" ^
C1002P	Men's Tall Short Sleeve Two-Pocket Classic Oxford in French Blue (FRB)	15.5 – 18.5"
C1012P	Men's Long Sleeve Two-Pocket Classic Oxford in French Blue (FRB), 33" / 35" / 37" Sleeve	14 – 21" ^
C1022P	Ladies' Short Sleeve Two-Pocket Classic Oxford in French Blue (FRB)	XS – 2XL
C1032P	Ladies' Long Sleeve Two-Pocket Classic Oxford in French Blue (FRB)	XS – 2XL

## Wrinkle-Resistant Classic Oxford

- 60% Cotton/40% polyester oxford with wrinkle-resistant finish
- seven-button top set placket • button-down collar • matte pearl buttons • left chest patch pocket on men's style • overlock construction • tailored two-button adjustable cuffs and sleeve placket on long sleeve style • standard back yoke shaped shirttail hem • available in long and short sleeves for men and women
- 1" top stitch hemmed cuffs on short sleeve styles • easy care machine wash and dry • 4.4 oz. • made in Canada

Colours: (BLU) Blue  
(WHT) White

(FRB) French Blue  
(CHR) Charcoal

THE BENEFITS! >



easy care



wrinkle resistant



^ 33" Sleeve Available in 14–21, 35" Sleeve Available in 15–21, 37" Sleeve Available in 15.5–21. Size 20.5 not available.



(GRN)

(BLU)

## THE BENEFITS! >



easy care



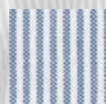
wrinkle  
resistant



### Striped Classic Oxford

- 60% Cotton / 40% polyester oxford with wrinkle-resistant finish
- seven-button top-set front placket • button-down collar • matte pearl buttons • left chest patch pocket on men's style • set-in sleeves • overlock construction • ladies' features back yoke with box pleat • shaped shirt tail hem • tailored two-button adjustable cuffs and sleeve plackets on long sleeve styles • 1" top stitch hemmed cuffs on short sleeve styles • easy care machine wash and dry • 4.4 oz. • made in Canada

Colours: (BLU) Blue (GRN) Green (GRY) Grey



Style #	Description	Men's or Ladies' Sizes
C112	Men's Short Sleeve Classic Striped Oxford	S – 4XL
C112T	Men's Tall Short Sleeve Classic Striped Oxford	MT – 4XLT
C113	Men's Long Sleeve Classic Striped Oxford, 33" Sleeve	S – 2XL
C113	Men's Long Sleeve Classic Striped Oxford, 35" / 37" Sleeve	M – 4XL
C114	Ladies' Short Sleeve Classic Striped Oxford	XS – 2XL
C115	Ladies' Long Sleeve Classic Striped Oxford	XS – 2XL



Made in Canada



# GREAT FOR SCHOOL UNIFORMS!



Classics for boys and girls



(WHT)



(BLU)

THE BENEFITS! >



easy care



wrinkle  
resistant



## Boys' and Girls' Classic Solid Dress Oxford

• 60% Cotton/40% polyester oxford with wrinkle-resistant finish • five-button top-set front placket • button-down collar • matte pearl buttons • left chest patch pocket • set-in sleeves • overlock construction • shaped shirt tail hem • tailored two-button adjustable cuffs and sleeve plackets on long sleeve styles • 1" top stitch hemmed cuffs on short sleeve style • easy care machine wash and dry • 4.4 oz. • made in Canada

Colours: (BLU) Blue (WHT) White

Style #	Description	Boys's or Girls' Sizes
C104	Boy's Short Sleeve Oxford Dress	4-8 all, 10-20 even
C105	Boy's Long Sleeve Oxford Dress	4-8 all, 10-20 even
C106	Girl's Short Sleeve Oxford Dress	4-8 all, 10-20 even
C107	Girl's Long Sleeve Oxford Dress	4-8 all, 10-20 even



(TAN)

(FRB)

(GRY)

# RICH COLOUR

In a classic, comfortable wrinkle-resistant shirt



## THE BENEFITS! >



easy care



wrinkle  
resistant



## Houndstooth Oxford

- 60% Cotton/40% polyester houndstooth check oxford with wrinkle-resistant finish
- seven-button top set placket
- button-down collar
- hornstone buttons
- left chest patch pocket on men's style
- overlock construction
- tailored two-button adjustable cuffs and sleeve placket
- standard back yoke
- shaped shirttail hem
- available in long and short sleeve styles for men and women
- 1" top stitch hemmed cuffs on short sleeve styles
- easy care machine wash and dry
- 4.4 oz.
- made in Canada

### Colours:

(CRM) Cream

(GRY) Grey

(FRB) French Blue

(TAN) Tan



### Style # Description

### Men's or Ladies' Sizes

C116	Men's Short Sleeve Houndstooth Oxford	S – 4XL
C116TT	Men's Short Sleeve Houndstooth Oxford – TALL SIZES	MT – 4XLT
C117S	Men's Long Sleeve Houndstooth Oxford 33" Sleeve	S – 2XL
C117S	Men's Long Sleeve Houndstooth Oxford 35"/37" Sleeve	M – 4XL
C118	Ladies' Short Sleeve Houndstooth Oxford	XS – 2XL
C119	Ladies' Long Sleeve Houndstooth Oxford	XS – 2XL
C311	Men's Short Sleeve Two-Pocket Houndstooth Oxford in French Blue (FRB)	S – 4XL
C312	Men's Long Sleeve Two-Pocket Houndstooth Oxford in French Blue (FRB)	S – 4XL

up to  
4XL



NEW  
LOWER  
PRICE

(BLK)

(BLU)

*Poised for success,  
with details to impress*

### Striped Yarn-Dyed Shirt

• 60% Cotton/40% polyester broadcloth with wrinkle-resistant finish and Teflon® technology that repels stains • point collar • seven –button top set placket • pearlized dyed-to-match buttons • left chest pocket on men's style • set-in sleeves • ladies' with front bust darts and slightly tapered fit • shaped shirt tail hem • easy care machine wash and dry • **MEN'S WITH TAILORED FIT**

Colours: (BLK) Black (BLU) Blue

Style #	Description	Men's or Ladies' Sizes
C240	Men's Long Sleeve Striped Yarn-Dyed Shirt	S – 3XL
C241	Ladies' Long Sleeve Striped Yarn-Dyed Shirt	XS – 2XL

THE BENEFITS! >



easy care



wrinkle  
resistant



stain  
resistant





# BEST VALUE

## GREAT FOR PROGRAMS



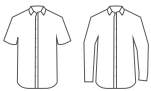


(BLK)

# PROFESSIONAL MEETS PRACTICAL

## Solid Broadcloth Shirt

- 65% Polyester/35% cotton solid broadcloth fabric • point collar • seven –button top set placket
- pearlized dyed-to-match buttons • left chest pocket on men's style • set-in sleeves • ladies' with front bust darts and slightly tapered fit • shaped shirt tail hem • easy care machine wash and dry



Colours: (BLK) Black (BLU) Blue (WHT) White

Style #	Description	Men's Sizes
C250	Men's Long Sleeve Solid Broadcloth Shirt	S – 5XL
C252	Men's Short Sleeve Solid Broadcloth Shirt	S – 5XL

THE BENEFITS! >



easy care wrinkle resistant

*Forsyth*

NEW  
LOWER  
PRICE

(BLK)

# CLASSIC UNIFORM WEAR

Feels comfortable and looks great all day

up to  
**4XL**

## Two-Pocket Uniform Shirt

• 65% Polyester/35% cotton permanent press fabric • seven-button top-set front placket • point collar • two front patch pockets with pencil slot • set-in sleeves • shaped shirt tail hem • tailored single-button cuff and sleeve placket on long sleeve style • easy care machine wash and dry • 3.3 oz.

### Short Sleeve

Colours: (NVY) Navy (BLK) Black (WHT) White

### Long Sleeve

Colours: (BLK) Black (WHT) White

Style #	Description	Men's or Ladies' Sizes
C305	Two-Pocket Short Sleeve Dress Shirt	XS – 4XL
C306A	Two-Pocket Long Sleeve Dress Shirt	XS – 4XL

THE BENEFITS! >



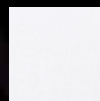
easy care



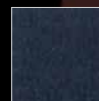
wrinkle  
resistant



(BLK)



(WHT)



(NVY)

Available  
in short  
sleeve only





## Tailored Fit

Our Tailored Fit shirt is contoured, yet not fully tapered, resulting in a made-to-measure feel. It is perfectly proportioned in every aspect including tails that ensure your shirt stays neatly tucked in place with no excess fabric bulk.

# the poplin PERFECTED

### A. C221 | Ladies' Perfect Stretch Poplin

- 69% Cotton/28% polyester/3% spandex solid poplin • taped shoulder and armhole seams • two-piece tailored spread collar • buttonless top placket • six-button full front with coordinating matte dyed to match buttons • tailored, two-piece fused spread collar • front bust and back vertical darts
- set-in long sleeves with two-button tailored cuffs • shaped shirttail hem • includes replacement button • easy care machine wash and dry • 3.2 oz. • imported

• available sizes: XS – 2XL

Colours: (ONX) Onyx (BBK) Black (WHT) White

### B. C220 | Perfect Stretch Poplin

- 69% Cotton/28% polyester/3% spandex solid poplin • taped shoulder and armhole seams • seven-button full front with coordinating matte dyed to match buttons • tailored, two-piece hidden button-down collar • set-in long sleeves with tailored placket and cuff • double back yoke with two pleats • shaped shirttail hem • includes replacement button • easy care machine wash and dry • 3.2 oz. • imported • **TAILORED FIT**

• available sizes: S-2XL

Colours: (ONX) Onyx (BBK) Black (WHT) White



THE BENEFITS! >



# WRINKLE-FREE FROM START TO FINISH

**Luxurious 80's two-ply 100% cotton** combines with a wrinkle free Non Iron finish and quality taped seam construction to give you true freedom from wrinkles.

Style #	Description	Men's Sizes
1514UP	Men's Spread Collar Trimmed Fit White only	14.5" – 19" ^

^ 33" Sleeve Available in 14.5–17.5"  
35" Sleeve Available in 15–18.5"  
37" Sleeve Available in 17–19"

**Trimmed Fit**  
White only



Men's  
Point Collar

(WHT)

(FRB)

(LBL)

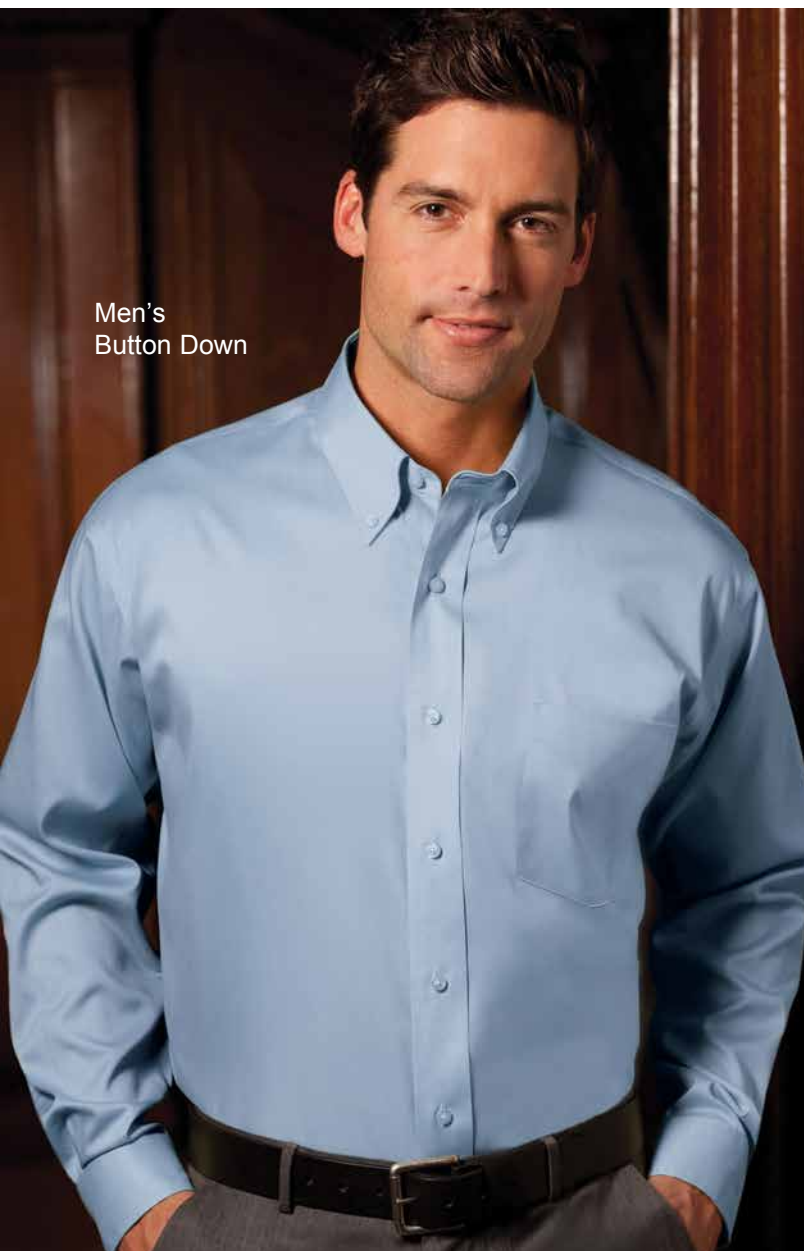
## AND THAT'S JUST PART OF THE BEAUTY!

**Quality Taped  
Seam Construction**

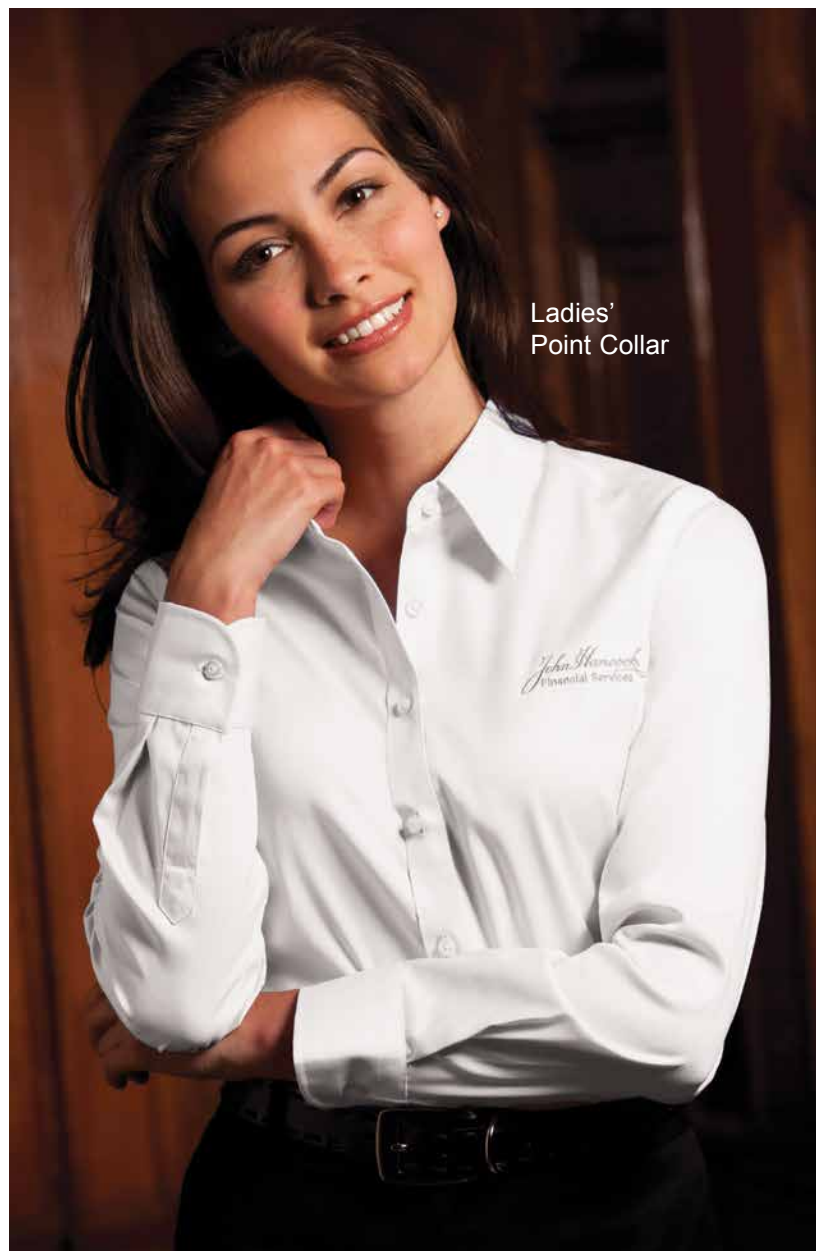
THE BENEFITS! >







Men's  
Button Down



Ladies'  
Point Collar

## The Freedom Shirt – Full Cut Worry-Free Executive Pinpoint Oxfords

- 100% 80's two-ply ringspun combed cotton with a wrinkle free Non Iron finish • deluxe construction features fully-taped seams, pockets, yokes and armholes for a smooth, wrinkle-free appearance that won't wash out • seven-button top set placket • matte pearl buttons • left chest patch pocket on men's style • set-in, hemmed long sleeves • tailored two-button adjustable cuffs and button-through sleeve placket • split back yoke with box pleat • shaped shirttail hem • easy care machine wash and dry • initial dryer process will activate the wrinkle-free finish • available in long sleeve button-down or point collar for men, long sleeve point collar for women • 3.9 oz.

Colours: (WHT) White (FRB) French Blue  
(LBL) Light Blue



Style #	Description	Men's or Ladies' Sizes
1514-111	Men's Point Collar (WHT) 33" / 35" / 37" Sleeve	14.5 – 21" ^
1515-111	Men's Point Collar (LBL) 33" / 35" / 37" Sleeve	15 – 21" ^
1644-111	Men's Point Collar (FRB) 33" / 35" / 37" Sleeve	15 – 21" ^
C128	Ladies' Point Collar (WHT), (LBL), (FRB)	XS – 2XL
1514-211	Men's Button Down Collar (WHT) 33" / 35" / 37" Sleeve	15 – 21" ^
1515-211	Men's Button Down Collar (LBL) 33" / 35" / 37" Sleeve	15 – 21" ^
1644-211	Men's Button Down Collar (FRB) 33" / 35" / 37" Sleeve	15 – 21" ^

^ 33" sleeve available in 14.5–17.5"  
35" sleeve available in 15.5–18.5"  
37" sleeve available in 15.5–21"

# The Freedom Shirt™

## NON IRON

## 100% COTTON HERRINGBONE



### 80'S 2-Ply

- 100% 80's two-ply ringspun combed cotton with a wrinkle free Non Iron finish
- deluxe construction features all seams and stress points fully-fused and taped for a clean, crisp appearance
- double-pleated cuff for comfort and ease of wear
- single-needle armhole and double-needle side seams for strength and smooth appearance
- cross-stitched buttons for durability
- **TAILORED FIT**

Style #	Description	Men's Sizes
7837-314	Men's Herringbone White 33" / 35" / 37" Sleeve	15" – 18"△
7838-314	Men's Herringbone French Blue 33" / 35" / 37" Sleeve	15" – 18"△
7839-314	Men's Herringbone Graphite 33" / 35" / 37" Sleeve	15" – 18"△

△ 33" Sleeve Available in 15–17  
35" Sleeve Available in 15.5–18.5  
37" Sleeve Available in 16.5–18.5"



THE BENEFITS! >



easy care



wrinkle free



taped seams

(WHT)

(CNF)

# 100% COTTON CHAMBRAY TWILL



## 80'S 2-Ply

• 100% 80's two-ply ringspun combed cotton with a wrinkle free Non Iron finish • deluxe construction features all seams and stress points fully-fused and taped for a clean, crisp appearance • double-pleated cuff for comfort and ease of wear • single-needle armhole and double-needle side seams for strength and smooth appearance • cross-stitched buttons for durability • **TAILORED FIT**

Style #	Description	Men's Sizes
8199-814	Men's Spread Collar White (WHT) 33" / 35" / 37" Sleeve	15" – 18" <sup>^</sup>
8195-814	Men's Spread Collar Corn Flower (CNF) 33" / 35" / 37" Sleeve	15" – 18" <sup>^</sup>

<sup>^</sup> 33" Sleeve Available in 15–17  
35" Sleeve Available in 15.5–18.5  
37" Sleeve Available in 16.5–18.5"





# ROYAL OXFORD

This finely detailed fabric has a refined look and stands up to wrinkles beautifully



*Luxurious 100's two-ply 100% cotton*  
Our **Tailored Fit** shirts are contoured, yet not fully tapered, resulting in a made-to-measure feel.

## Royal Oxford

• 100's two-ply ringspun 100% combed cotton royal oxford with a wrinkle free Non Iron finish • deluxe construction features fully taped seams, pockets, yokes and armholes for a smooth wrinkle-free appearance that won't wash out • seven button top-set front placket • matte pearl buttons • left chest patch pocket • set-in sleeves • shaped shirt tail hem • tailored two-button adjustable cuffs and button through sleeve plackets • easy care machine wash and dry • **TAILORED FIT**

Colours: (WHT) White (CNF) Cornflower

Style #	Description	Men's Sizes
4700-414	Men's Spread Collar (WHT) 33" / 35" / 37" Sleeve	15 – 18" ^
4786-414	Men's Spread Collar (CNF) 33" / 35" / 37" Sleeve	15 – 18" ^

^ 33" Sleeve Available in 15–18, 35" Sleeve Available in 15.5–18, 37" Sleeve Available in 16.5–18.

THE BENEFITS! >



easy care



wrinkle free



taped seams





# 100% COTTON PATTERNED YARN DYED

## Full Cut Fit

### 80'S 2-Ply

- 100% 80's two-ply ringspun combed cotton with a wrinkle free Non Iron finish • deluxe construction features all seams and stress points fully-fused and taped for a clean, crisp appearance • double-pleated cuff for comfort and ease of wear • single-needle armhole and double-needle side seams for strength and smooth appearance • cross-stitched buttons for durability •

^ 33" Sleeve Available in 15-17.5"  
35" Sleeve Available in 15.5-18.5"  
37" Sleeve Available in 15.5-21"

Style #	Description	Men's Sizes
F42582	Button Down Collar Charcoal Check (CHR)	15 – 21" ^
F15142	Button Down Collar Blue Stripe (BST)	15 – 21" ^
F42582	Button Down Collar Regatta Blue Check (REG)	15 – 21" ^
F42582	Button Down Collar White/Charcoal Check (WCH)	15 – 21" ^
F42582	Button Down Collar White/Regatta Check (WRB)	15 – 21" ^



THE BENEFITS! >







(NVY)

# TWILL SHIRT REGULAR FIT

**Style # Description Men's Sizes**

<b>C406</b>	<b>Men's Long Sleeve Wrinkle-Resistant Twill</b>	<b>XS – 4XL</b>
-------------	--	-----------------



(BLK)



(LBL)



(NVY)



(STO)

## Wrinkle-Resistant Twill

- 60% Cotton/40% polyester twill with wrinkle-resistant finish • features fully taped seams throughout for a smooth look • seven button top set placket • button-down collar • men's with comfort expandable collar • horn buttons • left chest patch pocket on men's style • ladies' with bust darts and a slightly tapered fit • set-in sleeves • two-button adjustable cuffs and sleeve placket on men's long sleeve style • single button cuffs with sleeve placket on ladies' long sleeve style • men's features shoulder yoke and box pleat • ladies' with shoulder yoke • shaped shirttail hem • available in short and long sleeve styles for men and women • 1" top stitched hemmed cuffs on short sleeve styles • easy care machine wash and dry • 4.4 oz.



(LBL)



Expandable Collar – Men's



Taped Seams



**Style # Description**

**Ladies' Sizes**

<b>C408</b>	<b>Ladies' Long Sleeve Wrinkle-Resistant Twill</b>	<b>XS – 2XL</b>
-------------	--	-----------------



(BLK)



(LBL)



(NVY)

THE BENEFITS! >



easy care



wrinkle  
resistant



taped  
seams



# TWILL SHIRT TAILORED FIT

## Cotton Polyester Blend Wrinkle-Resistant Twill

up to  
**4XL**



- 60% Cotton/40% polyester twill with wrinkle-resistant finish • features fully taped seams throughout for a smooth look • seven button top set placket • button-down collar • dyed to match buttons • left chest patch pocket on men's style • set-in sleeves • two-button adjustable cuffs and sleeve placket on men's long sleeve style • features shoulder yoke and back tucks • shaped shirttail hem • available in short and long sleeve styles • 1" top stitched hemmed cuffs on short sleeve styles • easy care machine wash and dry • 4.4 oz.



(BLK)

Men's  
Colours: (BLK) Black (GRY) Dark Grey (STO) Stone  
(LTB) Light Blue (NVY) Navy

Style #	Description	Men's or Ladies' Sizes
C410	Men's Short Sleeve Wrinkle-Resistant Twill	S – 4XL
C411	Men's Long Sleeve Wrinkle-Resistant Twill	S – 4XL
C408	Ladies' Long Sleeve Wrinkle-Resistant Twill Available in Light Blue and Black only Available in horn buttons only.	XS – 2XL

(GRY)

(STO)

(LTB)

(NVY)



THE BENEFITS! >



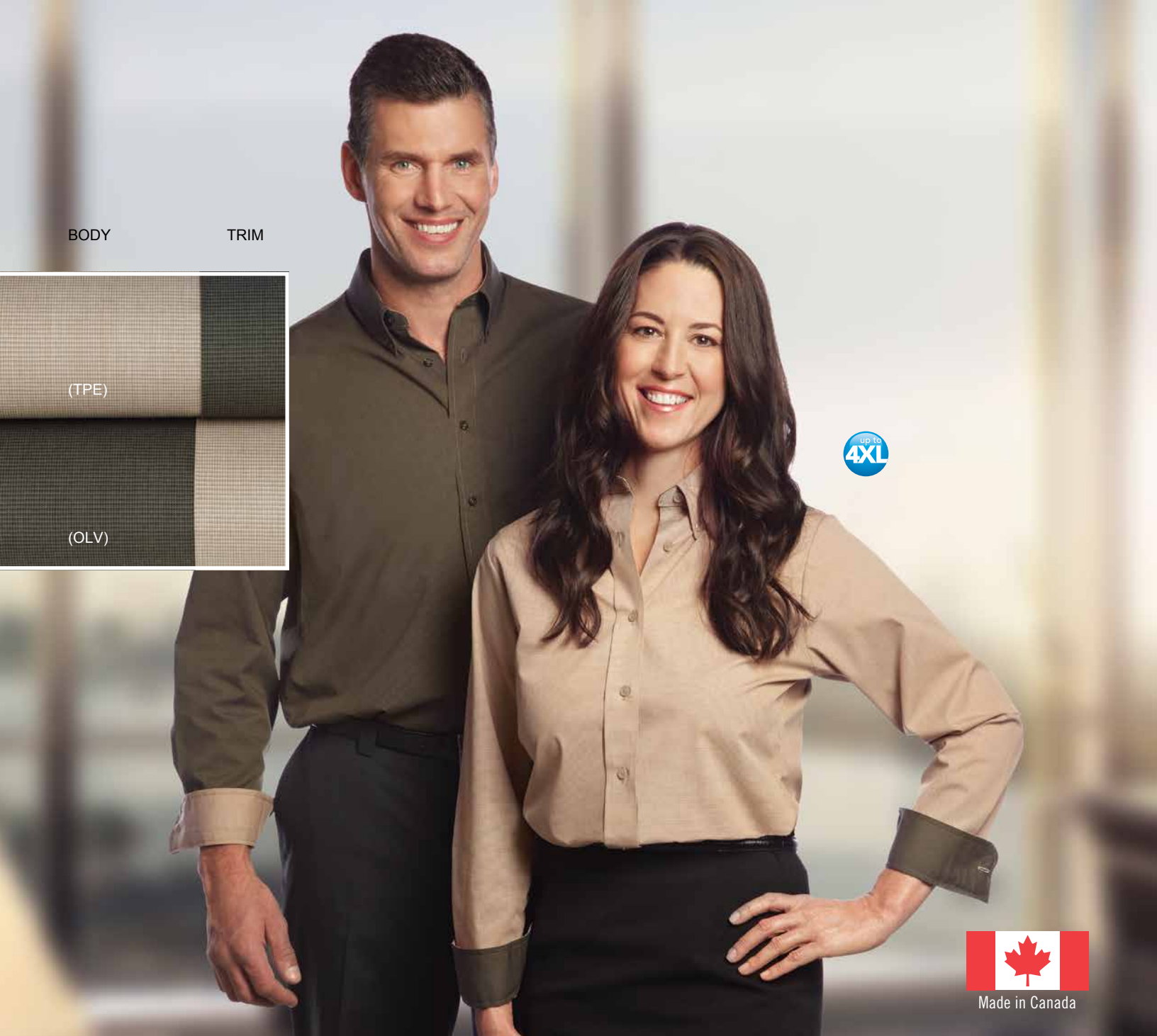
easy care



wrinkle  
free



taped  
seams



BODY

TRIM

(TPE)

(OLV)

up to  
4XL



Made in Canada

## Mini Yarn Dye Check

- 60% Cotton/40% polyester yarn dye broadcloth mini check with wrinkle-resistant finish • contrast inner collar and cuff on long sleeve • contrast inner collar on short sleeve • seven-button top set placket • button-down collar on men's style • soft tailored collar with top stitching on ladies' style • dyed-to-match buttons • left chest pocket on men's style • set-in, hemmed long sleeves • single needle top stitching • tailored two-button adjustable cuffs and sleeve placket • shoulder yoke with box pleat • shaped shirt tail hem • ladies' features square bottom hem • available in long and short sleeve styles for men and women • 1" top stitch hemmed cuffs on short sleeve styles • easy care machine wash and dry • 2.9 oz • made in Canada

Colours: (TPE) Taupe (OLV) Olive

THE BENEFITS! >



easy care



wrinkle resistant

Style #	Description	Men's or Ladies' Sizes
C260	Men's Short Sleeve Mini Check Yarn Dye	Sizes S – 4XL
C261	Men's Long Sleeve Mini Check Yarn Dye	Sizes S – 4XL
C262	Ladies' Short Sleeve Mini Check Yarn Dye	Sizes XS – 3XL
C263	Ladies' Long Sleeve Mini Check Yarn Dye	Sizes XS – 3XL





# deluxe pinpoint oxford

showcase your logo on our  
polished, wrinkle-resistant  
pinpoint oxford



Made in Canada

NEW  
COLOUR

up to  
4XL



## Deluxe Pinpoint Oxford

- 60% Cotton/40% polyester pinpoint oxford with wrinkle-resistant finish • contrast inner collar and cuff on long sleeve • contrast inner collar on short sleeve • seven-button top set placket • button-down collar • matte pearl buttons • left chest patch pocket on men's style • set-in, hemmed long sleeves • single-needle topstitching • tailored two-button adjustable cuffs and sleeve placket • back yoke with two tucks • shaped shirttail hem • available in long and short sleeve styles for men and women • 1" hemmed cuffs of short sleeve styles • easy care machine wash and dry • 4.2 oz • made in Canada

Colours: (FRB) French Blue



BODY

TRIM

THE BENEFITS! >



easy care



wrinkle  
resistant

Style #	Description	Sizes
C280	Men's Short Sleeve Deluxe Pinpoint Oxford	S – 4XL
C281	Men's Long Sleeve Deluxe Pinpoint Oxford	S – 4XL
C282	Ladies' Short Sleeve Deluxe Pinpoint Oxford	XS – 3XL
C283	Ladies' Long Sleeve Deluxe Pinpoint Oxford	XS – 3XL



SINCE 1903  
*Forsyth*  
shirtmaker chemisier



THE JOHN FORSYTH SHIRT COMPANY INC.  
[www.careerapparel.ca](http://www.careerapparel.ca)

© 2020 The John Forsyth Shirt Company Inc. All property rights reserved. Forsyth® is a registered mark of The John Forsyth Shirt Company Inc. All other brands and logos shown throughout this catalogue are trademarks, service marks and/or registered marks of their respective owners. All products are offered subject to availability and prices are subject to change without notice. The John Forsyth Shirt Company Inc., will not be responsible for typographical or printing errors contained in this catalogue.