



WHITE CROSS

FALL 2018



## Our Story

White Cross is a third-generation family business based in Montreal, Canada, distributing uniforms for over 100 years across North America, and now, into Latin America and other parts of the world.

Focusing on design & workmanship for functional & practical styling is what built the brand's reputation for uniqueness and creativity.

As White Cross evolves, we remain true to the base of the foundation of the business and stand by our brand and its products.

## Our Mission

To make, distribute and sell the finest quality healthcare uniforms from creative designs, with a continued commitment to incorporating high-standard materials. In addition, White Cross promotes business practices that respect individuals and the world we live in. And this, by operating the Company on a sustainable financial basis, increasing its value, and expanding opportunities for our partners.

## Our Vision

To be a company that propels you to live the part you play in this world.  
Wear it. Live it.



WEAR  
IT.  
LIVE  
IT.



WHITE CROSS



WHITE CROSS | FIT



WEAR  
FIT.  
LIVE  
FIT.



90% Polyester, 10% Spandex



4 WAY STRETCH FABRIC



QUICK DRY FABRIC



PULLS MOISTURE TO SURFACE, SO SKIN FEELS DRIER

Seize the day with White Cross Fit: the professional & athletic look for the "active" you.

## FIT COLORS



WHI  
WHITE



PWT  
PEWTER



BLA  
BLACK



NAV  
NAVY



CEILB  
CEIL BLUE



ROY  
ROYAL



NEW  
CARIB  
CARIBBEAN



FUS  
FUCHSIA



MYV  
MYSTIC VIOLET



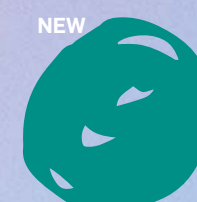
WINE  
WINE



FLM  
FLAMINGO



SUT  
SUNSET



NEW  
TEA  
TEAL



NEW  
GLB  
GALAXY BLUE

## FIT EXTREME COLORS



AQUA  
AQUA



XXX  
FRENCH PLUM



ROY  
ROYAL



NAV  
NAVY



PWT  
PEWTER



BLA  
BLACK



746-BLP



746-BLF



746-PWM



746-NAF



746-FUB



746-MJP



### 746-CONTRAST

For women who love running or who are permanently on one!

This fluid and soft top will support you all day long. The invisible lateral pockets allow this top to be functional with a sporty silhouette.

Center Back Length: 25 3/8"

**XXS-3XL**

90% Polyester, 10% Spandex

BLP-BLACK & PEWTER

FUB-FUCHSIA & BLACK

BLF-BLACK & FUCHSIA

MJP-MOONLIGHT JADE & PEWTER

PWM-PEWTER & MOONLIGHT JADE

NAF-NAVY & FUCHSIA

### 746

For women who love running or who are permanently on one!

This fluid and soft top will support you all day long. The invisible lateral pockets allow this top to be functional with a sporty silhouette.

Center Back Length: 25 3/8"

**XXS-3XL**

90% Polyester, 10% Spandex

AVAILABLE IN

BLA-BLACK

FUS-FUCHSIA

PWT-PEWTER

MYV-MYSTIC VIOLET

NAV-NAVY

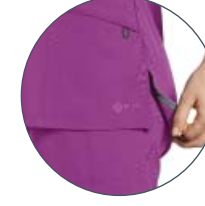
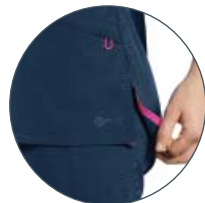
MJD-MOONLIGHT JADE

ROY-ROYAL

FLM-FLAMINGO

CEILB-CEIL BLUE

SUT-SUNSET



**748**  
 Show off your active lifestyle with this sportswear accent top. Finally a uniform that helps you tackle any challenge in style.  
 Center Back Length: 26 1/8"  
**XXS-3XL**  
 90% Polyester, 10% Spandex

AVAILABLE IN

- BLA-BLACK
- FUS-FUCHSIA
- PWT-PEWTER
- MYV-MYSTIC VIOLET
- NAV-NAVY
- MJD-MOONLIGHT JADE
- ROY-ROYAL
- CEILB-CEIL BLUE

**764**  
 This new top will lift your spirits! This new addition to the FIT collection adds a touch of sophistication thanks to the front zipper neckline. Be sure to stay zen in any situation!  
 Center Back Length: 26"  
**XXS-3XL**  
 90% Polyester, 10% Spandex

AVAILABLE IN

- BLA-BLACK
- FUS-FUCHSIA
- PWT-PEWTER
- MYV-MYSTIC VIOLET
- NAV-NAVY
- MJD-MOONLIGHT JADE
- ROY-ROYAL
- CEILB-CEIL BLUE
- WINE-WINE



# WHITE CROSS | FIT



### 785

If you liked style 740 from our Oasis collection, then you'll love this top in our Fit collection. Combined with our ultra soft fabric, you'll stay professional while maintaining simplicity.

Center Back Length: 26 3/8"

**XS-3XL**

90% Polyester, 10% Spandex



AVAILABLE IN

BLA-BLACK	FLM-FLAMINGO
PWT-PEWTER	SUT-SUNSET
NAV-NAVY	TEA-TEAL
GLB-GALAXY BLUE	CARIB-CARIBBEAN
ROY-ROYAL	MYV-MYSTIC VIOLET
CEILB-CEIL BLUE	

### 773

Classic and comfortable, this top is your new FIT piece and a must have addition for your wardrobe.

Center Back Length: 26 1/2"

**XS-3XL**

90% Polyester, 10% Spandex



AVAILABLE IN

NAV-NAVY
CEILB-CEIL BLUE
FLM-FLAMINGO





**452**  
Round athletic neck jacket that helps you style your wardrobe.  
Center Back Length: 24 3/4"  
**XS-3XL**  
88% Polyester, 12% Spandex

AVAILABLE IN  
**BLA-BLACK**



**318**  
Challenging the status quo and thinking outside the box, the FIT ultimate leggings will redefine the way people look at scrubs from now on while still bringing you comfort and keeping you looking professional.  
Inseam: 28 1/2"  
**XXS-3XL**  
88% Polyester, 12% Spandex

AVAILABLE IN  
**BLA-BLACK**



### 397/397P

With new colors and a new look, this piece will complete your FIT line. Cargo pockets are a great feature if you're looking for functionality. Inseam: Regular 31 1/2" Petite 29 1/2"

**REGULAR - XXS-3XL**  
**PETITE - XXSP-2XLP**

90% Polyester, 10% Spandex

AVAILABLE IN

- BLA-BLACK FUS-FUCHSIA
- PWT-PEWTER MYV-MYSTIC VIOLET
- NAV-NAVY MJD-MOONLIGHT JADE
- ROY-ROYAL
- CEILB-CEIL BLUE
- WINE-WINE

### 397T

Inseam: Tall 34"  
**TALL - XST-2XLT**  
90% Polyester, 10% Spandex

AVAILABLE IN

- BLA-BLACK
- PWT-PEWTER
- NAV-NAVY
- ROY-ROYAL
- CEILB-CEIL BLUE

### 373

A true statement of comfort and style. Thanks to its cargo pockets, this pant will be your best friend to tackle the day.

Inseam: Regular 31 1/2"  
**REGULAR - XXS-3XL**  
90% Polyester, 10% Spandex

AVAILABLE IN

- BLA-BLACK
- PWT-PEWTER
- NAV-NAVY
- GLB - GALAXY BLUE
- ROY-ROYAL
- CEILB-CEIL BLUE
- TEA-TEAL
- CARIB-CARIBBEAN
- FLM-FLAMINGO
- SUT-SUNSET
- MYV-MYSTIC VIOLET

### 373P

Inseam: Petite 29 1/2"  
**PETITE - XXSP-2XLP**

AVAILABLE IN

- BLA-BLACK
- PWT-PEWTER
- NAV-NAVY
- ROY-ROYAL
- CEILB-CEIL BLUE
- GLB - GALAXY BLUE
- TEA-TEAL
- CARIB-CARIBBEAN

### 373T

Inseam: Tall 34"  
**TALL - XST-2XLT**

AVAILABLE IN

- BLA-BLACK
- PWT-PEWTER
- NAV-NAVY



**328/328P/328T**

This pant is without compromise while keeping its athletic flair. We love it for its thought out details like the mini hidden pocket.

Inseam: Regular 31 1/2"

Petite 29 1/2"

Tall 34"

**REGULAR - XXS-3XL**

**PETITE - XXSP-2XLP**

**TALL - XXST-2XLT**

90% Polyester, 10% Spandex



AVAILABLE IN

BLA-BLACK	FUS-FUCHSIA
PWT-PEWTER	MYV-MYSTIC VIOLET
NAV-NAVY	MJD-MOONLIGHT JADE
ROY-ROYAL	
CEILB-CEIL BLUE	
WINE-WINE	

**399/399P**

With its ankle, elastic hems and breathable fabric details, this pant will totally work in a dance studio! Who says that a uniform cannot have personality?

Inseam:

Regular 29 1/2"

Petite 27 1/2"

**REGULAR - XXS-3XL**

**PETITE - XXSP-2XLP**

90% Polyester, 10% Spandex

AVAILABLE IN

BLA-BLACK	FUS-FUCHSIA
PWT-PEWTER	MYV-MYSTIC VIOLET
NAV-NAVY	MJD-MOONLIGHT JADE
ROY-ROYAL	

✘ CEILB-CEIL BLUE PLEASE NOTE THAT CEIL BLUE IS AVAILABLE ONLY IN THE REGULAR LENGTH.



### 2417

A modern lab coat with a touch of style. This is an essential piece to your professional wardrobe.

Center Back Length: 32"

**XXS-2XL**

90% Polyester, 10% Spandex

AVAILABLE IN

**BLA-BLACK**

**WHI-WHITE**



### 206

Thanks to its wicking properties, you will be able to get through any situation.

Center Back Length: 25 5/8"

**XS-3XL**

100% Polyester

AVAILABLE IN

**BLA-BLACK**

**PWT-PEWTER**

**NAV-NAVY**

**GLB-GALAXY BLUE**

**ROY-ROYAL**

**CEILB-CEIL BLUE**

**TEA-TEAL**

**CARIB-CARIBBEAN**

**WINE-WINE**

**FUS-FUCHSIA**

**MYV-MYSTIC VIOLET**

**MJD-MOONLIGHT JADE**

**FLM-FLAMINGO**

**SUT-SUNSET**

**WHI-WHITE**



**957**

Designed to be the trendy option to compliment your outfit, this FIT jacket will keep you warm while staying stylish at the same time.

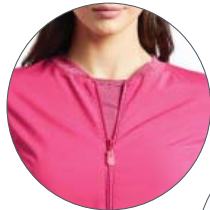
Center Back Length: 25 1/4"

**XS-3XL**

90% Polyester, 10% Spandex

AVAILABLE IN

- BLA-BLACK
- FUS-FUCHSIA
- PWT-PEWTER
- NAV-NAVY
- ROY-ROYAL
- CEILB-CEIL BLUE
- WINE-WINE



**803**

Our favorite choice for this season! It has the perfect balance between sporty and comfort. This jacket will be your best accessory for a polished look.

Center Back Length: 26"

**XS-3XL**

90% Polyester, 10% Spandex

AVAILABLE IN

- BLA-BLACK
- PWT-PEWTER
- NAV-NAVY



**792**

Stretch your limits with the White Cross FIT extreme fabric mock wrap v-neck top. With patch pockets for functionality and delicate gathering at the waist for a slimmer silhouette.

Center Back Length: 26 3/8"

**XXS-3XL**

76% Viscose, 20% Nylon, 4% spandex

AVAILABLE IN

- BLA-BLACK
- PWT-PEWTER
- NAV-NAVY
- ROY-ROYAL
- AQUA-AQUA

**774 NEW**

Add a little flare to your wardrobe with this new addition to the FIT collection. The clasp at the V-neck will definitely be a head turner.

Center Back Length: 26 3/8"

**XXS-3XL**

76% Viscose, 20% Nylon, 4% spandex

AVAILABLE IN

- BLA-BLACK
- PWT-PEWTER
- NAV-NAVY
- ROY-ROYAL
- AQUA-AQUA
- FPM-FRENCH PLUM

**778**

With this V-neck, your style is perfect! This top is perfectly paired with pant 390.

Center Back Length: 26 3/8"

**XXS-3XL**

76% Viscose, 20% Nylon, 4% spandex

AVAILABLE IN

- BLA-BLACK
- PWT-PEWTER
- NAV-NAVY
- ROY-ROYAL
- AQUA-AQUA
- FPM-FRENCH PLUM



**333/333P NEW**

Keeping with style 390's mission, this pant will help you move with ease and comfort throughout your busy day.  
Inseam: 31 1/2"

**REGULAR - XXS-3XL**  
**PETITE - XSP-2XLP**

76% Viscose, 20% Nylon, 4% spandex

AVAILABLE IN

- BLA-BLACK
- PWT-PEWTER
- NAV-NAVY
- ROY-ROYAL
- AQUA-AQUA
- FPM-FRENCH PLUM

**390/390P**

This cargo pants mission: comfy and practical. Making it perfect for the active you.

Inseam: 31 1/2"

**REGULAR - XXS-3XL**  
**PETITE - XSP-2XLP**

76% Viscose, 20% Nylon, 4% spandex

AVAILABLE IN

- BLA-BLACK
- PWT-PEWTER
- NAV-NAVY
- ROY-ROYAL
- AQUA-AQUA





Silky Stretch Fabric!  
So Comfy!



**PRETTY FLOATING PETALS NEW**

**740-PFG**

With this V-neck, your style is perfect!  
This top is perfectly paired with pant 390.  
Center Back Length: 26 3/8"  
**XS-3XL**

STRETCH: 92% Polyester, 8% Spandex



**LOTS OF DOTS-BLUE NEW**

**795-LTD**

This fluid, soft top with patch and side pockets will support you in your professional endeavors.  
Center Back Length: 25 3/8"  
**XS-3XL**

STRETCH: 92% Polyester, 8% Spandex





Silky Stretch Fabric!  
So Comfy!



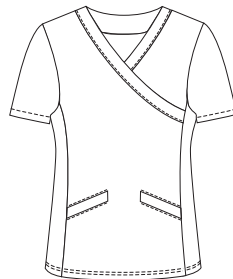
**LABYRINTH NEW**  
**742-LBH**

A lot happens in a day; this does not need to be the case with what you wear.

Center Back Length: 25 3/8"

**XS-3XL**

STRETCH: 92% Polyester, 8% Spandex



**SAMURAI NEW**  
**795-SMR**

This fluid, soft top with patch pockets will support you in your professional endeavors.

Center Back Length: 25 3/8"

**XS-3XL**

STRETCH: 92% Polyester, 8% Spandex





Silky Stretch Fabric!  
So Comfy!



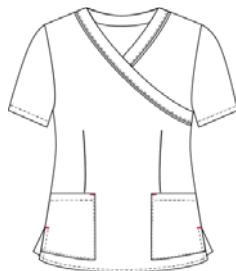
**LACY FLORAL**  
**745-LCF**

Originality is paired with charm when it is subtle. You will just need a piece of fabric to remind you the color of the pattern or a contrasting piece to enhance your style.

Center Back Length: 26 1/8"

**XS-3XL**

STRETCH: 92% Polyester, 8% Spandex



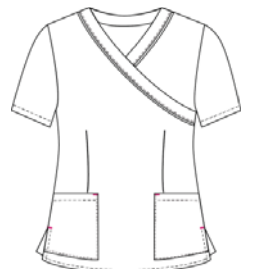
**BLOCK PARTY**  
**745-BLP**

Originality is paired with charm when it is subtle. You will just need a piece of fabric to remind you the color of the pattern or a contrasting piece to enhance your style.

Center Back Length: 26 1/8"

**XS-3XL**

STRETCH: 92% Polyester, 8% Spandex



Silky Stretch Fabric!  
So Comfy!



**MY PURPLE SPACE  
746-MPU**

For women who love running or are on a permanently on the run!  
This fluid and soft top will support you all day long. The invisible lateral pockets allow this top to be functional with a sporty silhouette.  
Center Back Length: 25 3/8"

**XS-3XL**

**STRETCH:** 92% Polyester, 8% Spandex



**MY PINK SPACE  
746-MPS**

For women who love running or who are permanently on one!  
This fluid and soft top will support you all day long. The invisible lateral pockets allow this top to be functional with a sporty silhouette.  
Center Back Length: 25 3/8"

**XS-3XL**

**STRETCH:** 92% Polyester, 8% Spandex





# WHITE CROSS | FIT

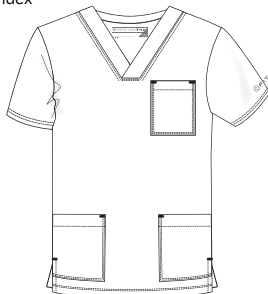
Silky Stretch Fabric!  
So Comfy!



**MY GREY SPACE NEW**  
**2263-MGS**

This fluid, soft top with patch pockets will support you in your professional endeavors.  
Center Back Length: 25 3/8"  
**XS-3XL**

STRETCH: 92% Polyester, 8% Spandex



**2269**

Simple and well-designed, this new men's top is like a second skin.  
Center Back Length: 27 7/8"  
**XS-3XL**  
90% Polyester, 10% Spandex

AVAILABLE IN

- BLA-BLACK
- PWT-PEWTER
- NAV-NAVY
- ROY-ROYAL



**2266**

Because your work can be very demanding, this top will help guide the flow of your day. Get the style and comfort of leisure clothing without neglecting your work attire.  
Center Back Length: 27 7/8"  
**XS-3XL**  
90% Polyester, 10% Spandex

AVAILABLE IN

- BLA-BLACK
- PWT-PEWTER
- NAV-NAVY
- ROY-ROYAL
- CEILB-CEIL BLUE
- WINE-WINE
- GLB-GALAXY BLUE





**224**

Elegant and sporty, the detail is in the elastic waistband which will bring you comfort and style.

Inseam: 32 1/8"

**XS-3XL**

90% Polyester, 10% Spandex



- BLA-BLACK
- PWT-PEWTER
- NAV-NAVY
- ROY-ROYAL

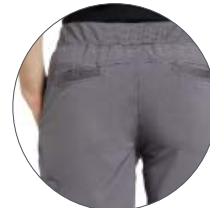
**229**

With its stretch fabric and strategically located breathable mesh details, this pant will adjust to your daily challenges.

Inseam: 32 1/8"

**XS-3XL**

90% Polyester, 10% Spandex



- AVAILABLE IN
- BLA-BLACK
  - PWT-PEWTER
  - NAV-NAVY
  - ROY-ROYAL
  - CEILB-CEIL BLUE
  - WINE-WINE
  - GLB-GALAXY BLUE



**746**  
XXS-3XL

**748**  
XXS-3XL

**773**  
XS-3XL

**764**  
XXS-3XL

**746-CONTRAST**  
XXS-3XL

**785**  
XS-3XL



## COLORS

BLA-BLACK

PWT-PEWTER

NAV-NAVY

GLB-GALAXY BLUE

ROY-ROYAL

CEILB-CEIL BLUE

TEA-TEAL

CARIB-CARIBBEAN

WINE-WINE

WHI-WHITE

FUS-FUCHSIA

MYV-MYSTIC VIOLET

MJD-MOONLIGHT JADE

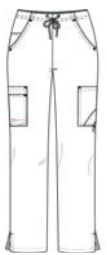
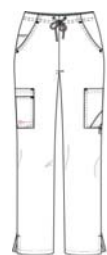
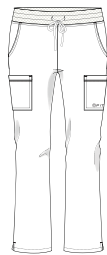
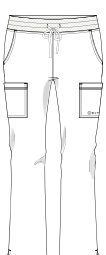
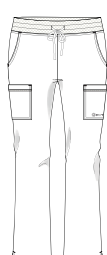
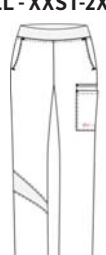
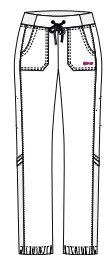
FLM-FLAMINGO

SUT-SUNSET

AQUA-AQUA

FPM-FRENCH PLUM



<p><b>397/397P</b> REGULAR - XXS-3XL PETITE - XXSP-2XLP</p> 	<p><b>397T</b> TALL - XST-2XLT</p> 	<p><b>373</b> REGULAR - XXS-3XL</p> 	<p><b>373P</b> PETITE - XXSP-2XLP</p> 	<p><b>373T</b> TALL - XST-2XLT</p> 	<p><b>328/328P/328T</b> REGULAR - XXS-3XL PETITE - XXSP-2XLP TALL - XXST-2XLT</p> 	<p><b>399/399P</b> REGULAR - XXS-3XL PETITE - XXSP-2XLP</p> 
--	--	---	---	---	---	---



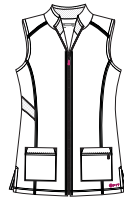
						<p>★ PLEASE NOTE THAT CEIL BLUE IS AVAILABLE ONLY IN THE REGULAR LENGTH.</p>
--	--	--	--	--	--	--



**957**  
XS-3XL



**803**  
XS-3XL



**2417**  
XXS-2XL



**774 NEW**  
XXS-3XL



**792**  
XXS-3XL



## COLORS

BLA-BLACK

PWT-PEWTER

NAV-NAVY

GLB-GALAXY BLUE

ROY-ROYAL

CEILB-CEIL BLUE

TEA-TEAL

CARIB-CARIBBEAN

WINE-WINE

WHI-WHITE

FUS-FUCHSIA

MYV-MYSTIC VIOLET

MJD-MOONLIGHT JADE

FLM-FLAMINGO

SUT-SUNSET

AQUA-AQUA

FPM-FRENCH PLUM

WHITE

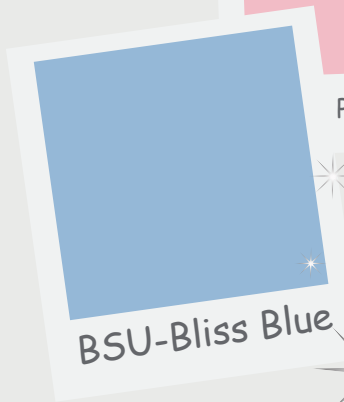
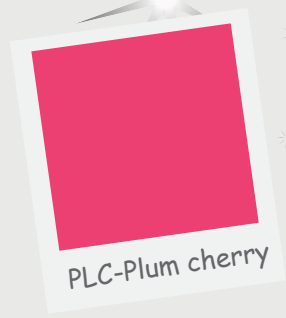
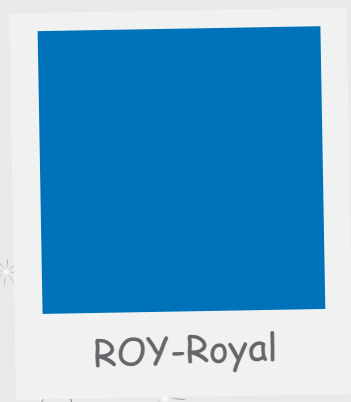
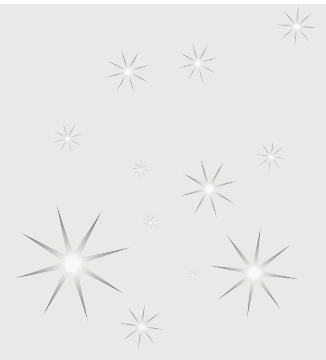
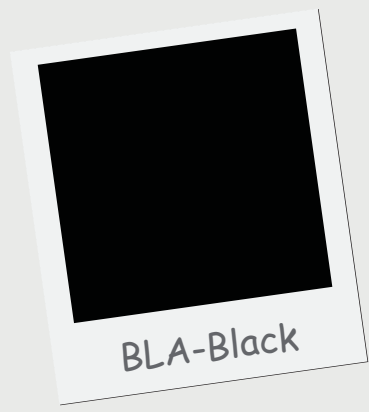






# Marvellia

## SIMPLY STYLISH



# Marvella COLORS

Start your day in style with scrubs that make a statement. This elegant collection was conceived to both flatter the body and feel luxurious on the skin. The tri-blend of Polyester, rayon and Spandex provide unmatched luxury and sophistication. Marvella by White Cross is the fashion must-have, where style and comfort go hand-in-hand.

# Marvella



Side Stretch Panels!



## 659

The White Cross Marvella Layered Patch Pocket V-Neck top drapes softly and gives a flattering shape with its double stitched seams.

Center Back Length: 26 3/8"

**XXS-3XL**

62% Polyester, 34% Rayon, 4% Spandex

AVAILABLE IN

WHI-WHITE	PLC-PLUM CHERRY
BLA-BLACK	ROD-RADIANT ORCHID
SEG-STEEL GREY	PBH-PINK BLUSH
SLE-SLATE	DPR-DEEP PURPLE
NAV-NAVY	BSU-BLISS BLUE
ROY-ROYAL	
CARIB-CARIBBEAN	
CEILB-CEIL BLUE	
WINE-WINE	

## 798

Work in style with a fresh sporty touch! The details and seams put it all together to make it your favorite Marvella top.

Center Back Length: 26 1/4"

**XXS-3XL**

62% Polyester, 34% Rayon, 4% Spandex

AVAILABLE IN

WHI-WHITE	PLC-PLUM CHERRY
BLA-BLACK	
SEG-STEEL GREY	
NAV-NAVY	
CARIB-CARIBBEAN	
CEILB-CEIL BLUE	
WINE-WINE	

# Marvella



Side Stretch Panels!



## 777

A lot happens in a day. This does not need to be the case with what you wear.

Center Back Length: 26 3/8"

**XXS-3XL**

62% Polyester, 34% Rayon, 4% Spandex

AVAILABLE IN

WHI-WHITE	PLC-PLUM CHERRY
BLA-BLACK	DPR-DEEP PURPLE
SEG-STEEL GREY	
NAV-NAVY	
ROY-ROYAL	
CEILB-CEIL BLUE	
WINE-WINE	

## 945

Flattering and functional, this jewel-neck double sided zip-front Marvella stretch jacket adds to your professional image.

Center Back Length: 25 5/8"

**XXS-2XL**

62% Polyester, 34% Rayon, 4% Spandex

AVAILABLE IN

WHI-WHITE
BLA-BLACK
SEG-STEEL GREY
NAV-NAVY
ROY-ROYAL
CEILB-CEIL BLUE

# Marvella



**784**

Enhance your femininity in the workplace with this irresistibly soft top.

Center Back Length: 26 3/4"

**XS-3XL**

62% Polyester, 34% Rayon, 4% Spandex

AVAILABLE IN

WHI-WHITE	PBH-PINK BLUSH
BLA-BLACK	BSU-BLISS BLUE
NAV-NAVY	
SLE-SLATE	

**782**

Soft and practical, this top is as comfortable as it is stylish, and will bring a feminine touch to your professional environment.

Center Back Length: 26 1/2"

**XXS-3XL**

62% Polyester, 34% Rayon, 4% Spandex

AVAILABLE IN

WHI-WHITE	PBH-PINK BLUSH
BLA-BLACK	BSU-BLISS BLUE
NAV-NAVY	
SLE-SLATE	

# Marvella



## 755 NEW

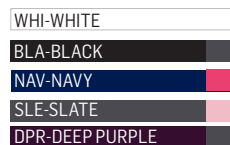
Let's spice up Marvella! Renowned for its softness and great comfort, our newest introduction adds a flare of fashion to the line.

Center Back Length: 26 1/2"

**XXS-3XL**

62% Polyester, 34% Rayon, 4% Spandex

AVAILABLE IN



## 789-WHI

Dark accents contour this new Marvella top. The waistline is emphasized with elegance.

Center Back Length: 26 3/8"

**XXS-2XL**

62% Polyester, 34% Rayon, 4% Spandex

AVAILABLE IN



# Marvella



## 384/384P

A new season means a new style! This Marvella pant will bring a breath of fresh air to any wardrobe.

Inseam:

Regular 31 1/2"

Petite 29 1/2"

**XXS-3XL**

**XXSP-2XLP**

62% Polyester, 34% Rayon, 4% Spandex

AVAILABLE IN

WHI-WHITE

PBH-PINK BLUSH

BLA-BLACK

BSU-BLISS BLUE

NAV-NAVY

SLE-SLATE







**354**

The White Cross Marvella Yoga pant, is the perfect combination of comfort and fluidity. Regular 31 1/2"

**REGULAR - XXS-2XL**

62% Polyester, 34% Rayon, 4% Spandex

AVAILABLE IN

- WHI-WHITE
- BLA-BLACK
- SEG-STEEL GREY
- NAV-NAVY
- ROY-ROYAL
- CEILB-CEIL BLUE
- DPR-DEEP PURPLE

**354P**

Petite 29 1/2"

**PETITE - XXSP-2XLP**

62% Polyester, 34% Rayon, 4% Spandex

AVAILABLE IN

- BLA-BLACK
- NAV-NAVY
- DPR-DEEP PURPLE

**354T**

Tall 34"

**TALL - XXST-2XLT**

62% Polyester, 34% Rayon, 4% Spandex

AVAILABLE IN

- BLA-BLACK
- NAV-NAVY
- DPR-DEEP PURPLE

**309/309P/309T**

This Marvella pant offers ultimate comfort with its adjustable elastic waist, soft brushed weave; all with a touch of style.

Regular 31 1/2"

Petite 29 1/2"

Tall 34"

**REGULAR - XXS-3XL**

**PETITE - XXSP-2XLP**

**TALL - XXST-3XLT**

62% Polyester, 34% Rayon, 4% Spandex

AVAILABLE IN

- |                |                 |                 |
|----------------|-----------------|-----------------|
| WHI-WHITE      | ROY-ROYAL       | PLC-PLUM CHERRY |
| BLA-BLACK      | CARIB-CARIBBEAN | DPR-DEEP PURPLE |
| SEG-STEEL GREY | CEILB-CEIL BLUE | PBH-PINK BLUSH  |
| SLE-SLATE      | WINE-WINE       | BSU-BLISS BLUE  |
| NAV-NAVY       |                 |                 |



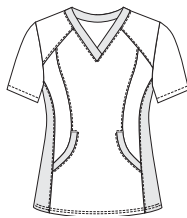
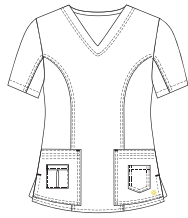
**659**  
XXS-3XL

**798**  
XXS-3XL

**777**  
XXS-3XL

**945**  
XXS-2XL

**782**  
XXS-3XL



## COLORS

**BLA-BLACK**

**WHI-WHITE**

WHITE

WHITE

WHITE

WHITE

WHITE

**SLE-SLATE**

**SEG-STEEL GREY**

**NAV-NAVY**

**ROY-ROYAL**

**CARIB-CARIBBEAN**

**CEILB-CEIL BLUE**

**WINE-WINE**

**PLC-PLUM CHERRY**





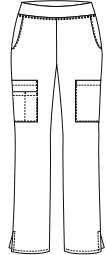
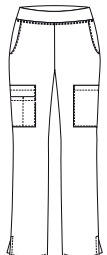

**ROD-RADIANT ORCHID**

**PBH-PINK BLUSH**

**DPR-DEEP PURPLE**

**BSU-BLISS BLUE**



<p><b>784</b> XS-3XL</p>	<p><b>755 NEW</b> XXS-3XL</p>	<p><b>789-WHI</b> XXS-2XL</p>	<p><b>309/309P/309T</b> REGULAR - XXS-3XL PETITE - XXSP-2XLP TALL - XXST-3XLT</p>	<p><b>354</b> REGULAR - XXS-2XL</p>	<p><b>354P</b> PETITE - XXSP-2XLP <b>354T</b> TALL - XXST-2XLT</p>	<p><b>384</b> XXS-3XL XXSP-2XLP</p>
						
<p>WHITE</p>	<p>WHITE</p>	<p>WHITE</p>	<p>WHITE</p>	<p>WHITE</p>		<p>WHITE</p>

oasis 





# SAIL AWAY



MIT  
MIST



CRF  
CORAL REEF



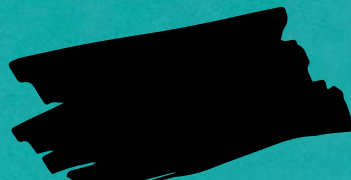
TRQ  
TURQUOISE



DGF  
DRAGON FRUIT



PWT  
PEWTER



BLA  
BLACK



NAV  
NAVY

Get swept away in the look and feel of the islands with our Oasis collection. Made from ultra-soft 100% polyester, Oasis offers breathability, stretch and overall comfort designed to keep you going all-day long. Its dobby stripe texture and knit inserts offer an athletic flare complementing its soft island colors.



**T208**  
 This elegant new striped Oasis t-shirt will make heads turn!  
 Center Back Length: 26 1/2"  
**XS-3XL**  
 95% Rayon, 5% Spandex



AVAILABLE IN



BLA BLACK & PEWTER    NAV NAVY & WHITE    CRF CORAL REEF & WHITE    MIT MIST & WHITE

**740**  
 3 different fabrics are used to create this unique top with sporty accents. It has all the comfort you need to tackle the day.  
 Center Back Length: 26 3/8"  
**XS-3XL**  
 100% Polyester

AVAILABLE IN





**744**

This sporty look is perfect to maintain your professional look. Thanks to its ribbed sides, it will bring you all the necessary comfort through out your day.  
Center Back Length: 26"

**XS-3XL**

100% Polyester

AVAILABLE IN

- BLA-BLACK
- PWT-PEWTER
- NAV-NAVY
- CRF-CORAL REEF
- MIT-MIST
- TRQ-TURQUOISE
- DGF-DRAGON FRUIT

**776**

Simple and comfortable, this top with ribbed sides will be the best option to tackle the day.  
Center Back Length: 26 1/8"

**XS-3XL**

100% Polyester

AVAILABLE IN

- BLA-BLACK
- PWT-PEWTER
- NAV-NAVY
- CRF-CORAL REEF
- MIT-MIST
- TRQ-TURQUOISE
- DGF-DRAGON FRUIT

# oasis



### 340/340P

Our Oasis elastic waist scrub pant is about durability and motion, combined with comfort and style. Easy wear, easy care!

Inseam:  
Regular 31 1/2"  
Petite 29 1/2"

**XS-3XL**  
**XSP-2XLP**  
100% Polyester

AVAILABLE IN

- BLA-BLACK CRF-CORAL REEF
- PWT-PEWTER MIT-MIST
- NAV-NAVY TRQ-TURQUOISE
- DGF-DRAGON FRUIT



### 322

With its stretch band in jersey knit, this pant is a must for a simple and comfortable look.

Inseam: Regular 31 1/2"

**XXS-3XL**  
100% Polyester

AVAILABLE IN

- BLA-BLACK
- PWT-PEWTER
- NAV-NAVY
- CRF-CORAL REEF
- MIT-MIST
- TRQ-TURQUOISE
- DGF-DRAGON FRUIT

### 322P

Inseam: Petite 29 1/2"

**XSP-2XLP**  
100% Polyester

AVAILABLE IN

- BLA-BLACK
- PWT-PEWTER
- NAV-NAVY





	T208 XS-3XL	740 XS-3XL	744 XS-3XL	776 XS-3XL	322 XXS-3XL	322P XSP-2XLP	340/340P XS-3XL XSP-2XLP
<b>COLORS</b>							
BLA-BLACK							
PWT-PEWTER							
NAV-NAVY							
CRF-CORAL REEF							
MIT-MIST BLUE							
TRQ-TURQUOISE							
DGF-DRAGON FRUIT							

# ALLURE



STAY IN  
YOUR  
COMFORT  
ZONE

COMFORTFLEX  
&  
STRETCH  
TECHNOLOGY

# COLORS

BLA  
BLACK

KHA  
Khaki

PWT  
Pewter

GAP  
Green Apple

BCR  
Blue Curacao

SLE  
Slate

MGT  
Magic Mint

CEILB  
Ceil Blue

GRE  
Grey

BHW  
Blue Hawaii

WHI  
White

TGO  
Tangelo

ROY  
Royal

LIP  
Lipstick

CARIB  
Caribbean

PKT  
Pink Cocktail

HRD  
Heritage Red

GLB  
Galaxy Blue

PKS  
Pink Sachet

WINE  
Wine

NAV  
Navy

FUS  
Fuchsia

PRK  
Paris Pink

PUR  
Purple

Your job may be rough but your scrubs don't have to be. Thanks to a subtle blend of cotton, polyester and spandex, the Allure Collection by White Cross delivers versatility and comfort that is second to none. Natural cotton fibers provide a softer feel against the skin, and form fitting styles using comfortflex technology help you move from task to task with ease and flexibility.



BLA-Black with Pink Cocktail and Grey

PKT-Pink Cocktail with Pewter and Grey

HRD-Heritage Red with Pewter and Black

FUS-Fuchsia with Pewter and Black

PWT-Pewter with Tangelo and Grey



CARIB-Caribbean with Grey and Pewter

WINE-Wine with Grey and Pewter

NAV-Navy with Blue Hawaii and Blue Curacao

CEILB-Ceil Blue with Navy and Grey

MGT-Magic Mint with Grey and Pewter



PUR-Purple with Grey and Pewter

PRK-Paris Pink with Grey and Pewter

NCB -Navy with Ceil Blue and Grey

GRE-Grey with Pewter and Black

LIP-Lipstick with Pewter and Black

## 715

The contrast knit trim and the ComfortFlex technology add extra sporty accents to this Allure V-neck scrub top.

Center Back Length: 25 5/8"

**XXS-3XL**

62% Cotton,

36% Polyester,

2% Spandex



**741**

Looking distinguished in a workwear scrub may sound contradictory. Well, we've changed that with this style!  
 Center Back Length: 26 3/8"  
**XXS-3XL**  
 62% Cotton, 36% Polyester,  
 2% Spandex

AVAILABLE IN

**310/310P**

Utility meets detail in this motion-comfort straight-fit cargo pant.  
 Regular 31 1/2"  
 Petite 29 1/2"  
**REGULAR - XXS-3XL**  
**PETITE - XXSP-3XLP**  
 62% Cotton, 36% Polyester,  
 2% Spandex

AVAILABLE IN

HRD

FUS

BLA

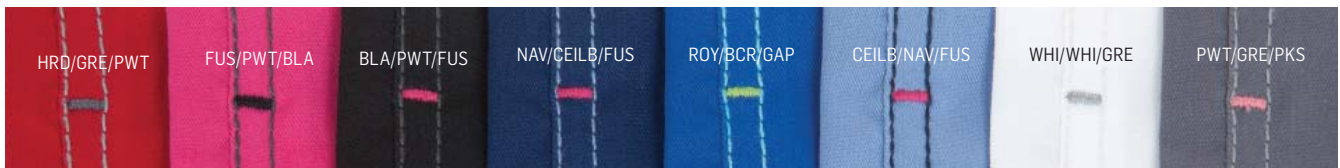
NAV

ROY

CEILB

WHI

PWT



HRD/GRE/PWT

FUS/PWT/BLA

BLA/PWT/FUS

NAV/CEILB/FUS

ROY/BCR/GAP

CEILB/NAV/FUS

WHI/WHI/GRE

PWT/GRE/PKS



## 949

Your practical and distinctive extra layer: the Allure cardigan-style button-front warm-up jacket with multiple pockets.

Center Back Length: 27"

**XS-3XL**

62% Cotton, 36% Polyester,  
2% Spandex

AVAILABLE IN

WHI-WHITE	CARIB-CARIBBEAN
BLA-BLACK	KHA-KHAKI
PWT-PEWTER	
NAV-NAVY	
ROY-ROYAL	
CEILB-CEIL BLUE	
WINE-WINE	

Stretch Panels!



## 722

This slim-fitting Allure top, with its curved stretch-knit side panels & Knit V-neck keeps you in your comfort zone.

Center Back Length: 26 1/4"

**XXS-3XL**

62% Cotton, 36% Polyester,

2% Spandex

AVAILABLE IN

WHI-WHITE	HRD-HERITAGE RED
BLA-BLACK	FUS-FUCHSIA
PWT-PEWTER	PKT-PINK COCKTAIL
GRE-GREY	PKS-PINK SACHET
NAV-NAVY	KHA-KHAKI
GLB-GALAXY BLUE	GAP-GREEN APPLE
ROY-ROYAL	BCR-BLUE CURACAO
CARIB-CARIBBEAN	BHW-BLUE HAWAII
CEILB-CEIL BLUE	
WINE-WINE	

COMFY PANT



YOGA PANT



**308/308P/308T**

Make organizing easy with the White Cross Allure Women's Elastic Waist Cargo Scrub Pant. With lots of pockets and a convenient bungee loop to keep the day's essentials secured.

Regular 31 1/2"

**REGULAR - XXS-5XL**

62% Cotton, 36% Polyester, 2% Spandex

AVAILABLE IN

- WHI-WHITE
- BLA-BLACK
- PWT-PEWTER
- GRE-GREY
- CARIB-CARIBBEAN
- WINE-WINE
- NAV-NAVY
- CEILB-CEIL BLUE
- KHA-KHAKI
- MGT-MAGIC MINT

Petite 29 1/2"

**PETITE - XXSP-2XLP**

- BLA-BLACK
- PWT-PEWTER
- NAV-NAVY
- CEILB-CEIL BLUE
- KHA-KHAKI

Tall 34"

**TALL - XST-2XLT**

- BLA-BLACK
- PWT-PEWTER
- NAV-NAVY
- CEILB-CEIL BLUE

**351/351P/351T**

The White Cross Allure Yoga pant, is engineered for comfort & fit. It moves with you in beauty and simplicity.

Regular 31 1/2"

Petite 29 1/2"

Tall 34"

**REGULAR - XXS-3XL**

**PETITE - XXSP-3XLP**

**TALL - XXST-3XLT**

62% Cotton, 36% Polyester, 2% Spandex

AVAILABLE IN

- |                 |                   |
|-----------------|-------------------|
| WHI-WHITE       | HRD-HERITAGE RED  |
| BLA-BLACK       | FUS-FUCHSIA       |
| PWT-PEWTER      | PRK-PARIS PINK    |
| GRE-GREY        | PKT-PINK COCKTAIL |
| NAV-NAVY        | TGO-TANGELO       |
| GLB-GALAXY BLUE | KHA-KHAKI         |
| ROY-ROYAL       | GAP-GREEN APPLE   |
| CARIB-CARIBBEAN | MGT-MAGIC MINT    |
| CEILB-CEIL BLUE | BCR-BLUE CURACAO  |
| WINE-WINE       | BHW-BLUE HAWAII   |

# ALLURE

## RETRO SPORT



**787**

**RETRO STRIPES**

This vibrant color top will appeal to you with its retro chic touch.

Center Back Length: 26"

**XS-2XL**

100% Cotton

AVAILABLE IN

RTS-RETROSTRIPES



**788**

With its stylish details and contrasting v-neck line, show your personality and be professional all at the same time.

Center Back Length: 25 3/4"

**XS-3XL**

62% Cotton, 36% Polyester, 2% Spandex

AVAILABLE IN



SLL-SLATE WITH LIPSTICK



SLB-SLATE WITH BLUE CURACAO



BCR-BLUE CURACAO



LIP-LIPSTICK



# ALLURE

## RETRO SPORT



### 383/383P

A modern look for a modern woman. This trendy pant will complete your professional and active look.

Inseam: Regular 31 1/2"

Petite 29 1/2"

**XS-3XL**

**XSP-2XLP**

62% Cotton, 36% Polyester, 2% Spandex

AVAILABLE IN



SLB-SLATE WITH BLUE CURACAO



SLL-SLATE WITH LIPSTICK



BCR-BLUE CURACAO



LIP-LIPSTICK

# ALLURE M



## 2265

We designed this top with your needs in mind. A top that brings comfort to your daily routine, yet is still fashionable and shows off your personality.  
Center Back Length: 29 7/8"

### XS-3XL

62% Cotton, 36% Polyester, 2% Spandex

#### AVAILABLE IN

WHI-WHITE
BLA-BLACK
PWT-PEWTER
NAV-NAVY
ROY-ROYAL
CEILB-CEIL BLUE



## MEN'S PANT

### 225

You won't be disappointed with our new men's pant! With its specific details and soft fabric, quality is what we care about the most. This pant will be the answer to your daily needs.

Inseam: 31 1/8"

#### XS-3XL

62% Cotton, 36% Polyester, 2% Spandex

#### AVAILABLE IN

- WHI-WHITE
- BLA-BLACK
- PWT-PEWTER
- NAV-NAVY
- ROY-ROYAL
- CEILB-CEIL BLUE



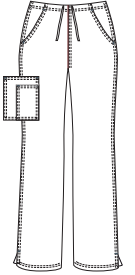
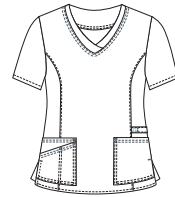
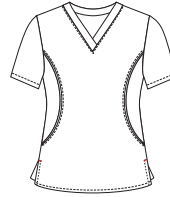
949  
XS-3XL

715  
XXS-3XL

722  
XXS-3XL

741  
XXS-3XL

310/310P  
REGULAR - XXS-3XL  
PETITE - XXSP-3XLP



## COLORS

BLA-BLACK

WHI-WHITE

SLE-SLATE

PWT-PEWTER

GRE-GREY

NAV-NAVY

ROY-ROYAL

GLB-GALAXY BLUE

CARIB-CARIBBEAN

CEILB-CEIL BLUE

WINE-WINE

HRD-HERITAGE RED

LIP-LIPSTICK

FUS-FUCHSIA

PKS-PINK SACHET

PRK-PARIS PINK

PKT-PINK COCKTAIL

TGO-TANGELO

KHA-KHAKI

GAP-GREEN APPLE

MGT-MAGIC MINT

BCR-BLUE CURACAO

BHW-BLUE HAWAII

WHITE

WHITE

WHITE

WHITE



<b>308</b> <b>REGULAR</b> <b>XXS-5XL</b>	<b>308P</b> <b>PETITE</b> <b>XXSP-2XLP</b>	<b>308T</b> <b>TALL</b> <b>XST-2XLT</b>	<b>351/351P/351T</b> <b>REGULAR - XXS-3XL</b> <b>PETITE - XXSP-3XLP</b> <b>TALL - XXST-3XLT</b>	<b>788</b> <b>XS-3XL</b>	<b>383/383P</b> <b>XS-3XL</b> <b>XSP-2XLP</b>	<b>2265</b> <b>XS-3XL</b>	<b>225</b> <b>XS-3XL</b>

WHITE			WHITE			WHITE	WHITE



**T205BE**

Enhance your look with the White Cross t-shirt as an under-scrub or simply on its own! This T-shirt is made of Birdseye fabric.  
Center Back Length: 26 1/2"  
**XS-3XL**  
100% Polyester

AVAILABLE IN

■ BLA ■ WHI ■ NAV



**T208**

This elegant new striped Oasis t-shirt will make heads turn!  
Center Back Length: 26 1/2"  
**XS-3XL**  
95% Rayon, 5% Spandex

AVAILABLE IN

■ BLA ■ NAV  
■ CRF ■ MIT

# UNDER SCRUBS



## **STRETCH T-SHIRT 205**

Enhance your look with the White Cross t-shirt  
as an under-scrub or simply on its own!  
Center Back Length: 27"

**XS-3XL**

95% Cotton, 5% Spandex

AVAILABLE IN

WHI	GRE	NAV	BLA
ROD	BCR	TGO	GAP
PKS	PWT	FUS	CEILB



# FRENCH TERRY & FLEECE



**FRENCH TERRY JACKET  
445**

Stay warm and comfy in this sporty White Cross French Terry zipper front Jacket.

Center Back Length: 24 7/8"

**XS-3XL**

96% Cotton, 4% Spandex

AVAILABLE IN

■ BLA ■ NAV □ WHI



**FLEECE JACKET  
448**

The cozy White Cross Polar Fleece Jacket keeps you warm and features a zippered front and elastic bias trim on the sleeves and bottom as well as pockets in the front inseam.

Center Back Length: 26 1/2"

**XS-3XL**

100% Polyester

AVAILABLE IN

■ BLA ■ PWT ■ FUS ■ NAV □ WHI ■ ROY





# VEST



**VEST  
802**

For extra pocket space or storage, without the feel of an extra layer, this vest has you covered!

**XS-3XL**

65% Polyester, 35% Cotton

AVAILABLE IN

■ BLA	■ CEILB	■ NAV
■ WINE	■ WHI	■ CARIB
■ TEA	■ GLB	



PRINTS

# FALL 2018

## WHAT'S NEW



FELINE FUSION



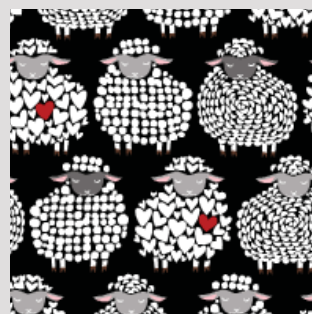
HIGHLAND'S NOEL



HAPPY PUMPKINS



ORCHID PAISLEY



LOVE TRIANGLE



FLORAL PHILOSOPHY



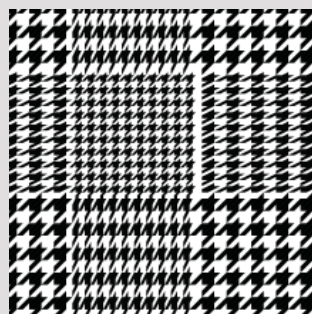
NOCTURNAL PALS



PINK'GUINS



RIBBON 'N LACE



PUPPYTOOTH



INTO THE COLORS

SEE MORE...

# WHAT'S NEW

*Silky Stretch Fabric!  
So Comfy!*



**RIBBON 'N LACE NEW  
618-RNL**

This V-neck top is multifunctional thanks to its different pockets including a hidden one.

Center Back Length: 26 3/8"

**XS-3XL**

**STRETCH:** 92% Polyester, 8% Spandex



**FLORAL PHILOSOPHY NEW  
745-FPY**

Originality is paired with charm when it is subtle. You will just need a piece of fabric to remind you the color of the pattern or a contrasting piece to enhance your style.

Center Back Length: 26 1/8"

**XS-3XL**

**STRETCH:** 92% Polyester, 8% Spandex



**PUPPYTOOTH NEW  
618-PYT**

This V-neck top is multifunctional thanks to its different pockets including a hidden one.

Center Back Length: 26 3/8"

**XS-3XL**

**STRETCH:** 92% Polyester, 8% Spandex



**FELINE ILLUSION NEW  
799-FIN**

This V-neck top is multifunctional thanks to its different pockets including a hidden one.

Center Back Length: 26 3/8"

**XS-3XL**

**STRETCH:** 92% Polyester, 8% Spandex



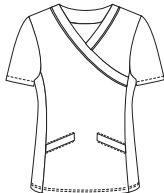
**ORCHID PAISLEY NEW  
742-HPS**

A lot happens in a day; this does not need to be the case with what you wear.

Center Back Length: 26 3/8"

**XS-3XL**

**100% Cotton**



**LOVE TRIANGLE NEW  
618-LTL**

This V-neck top is multifunctional thanks to its different pockets including a hidden one.

Center Back Length: 26 3/8"

**XS-3XL**

**100% Brushed Cotton**



**INTO THE COLORS NEW  
618-TCN**

This V-neck top is multifunctional thanks to its different pockets including a hidden one.

Center Back Length: 26 3/8"

**XS-3XL**

**100% Brushed Cotton**





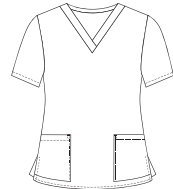
**HAPPY PUMPKINS NEW**  
**618-HPM**

This V-neck top is multifunctional thanks to its different pockets including a hidden one.  
Center Back Length: 26 3/8"  
**XS-3XL**  
100% Brushed Cotton



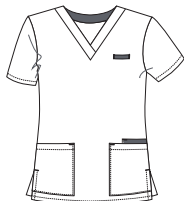
**FLAPPY FEET**  
**617-FPF**

The V-Neck scrub top in its purest and simplest form allows the print to be the eye-catching element.  
Center Back Length: 26 3/8"  
**XS-5XL**  
100% Cotton



**PINK'GUINS NEW**  
**618-PKG**

This V-neck top is multifunctional thanks to its different pockets including a hidden one.  
Center Back Length: 26 3/8"  
**XS-3XL**  
100% Brushed Cotton



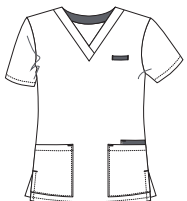
**HIGHLAND'S NOEL NEW**  
**618-HDN**

This V-neck top is multifunctional thanks to its different pockets including a hidden one.  
Center Back Length: 26 3/8"  
**XS-3XL**  
100% Brushed Cotton



**NOCTURNAL PALS NEW**  
**618-NLP**

This V-neck top is multifunctional thanks to its different pockets including a hidden one.  
Center Back Length: 26 3/8"  
**XS-3XL**  
100% Brushed Cotton



# CHIT CHAT



**BUTTERFLY PRISM  
618-BPM**

This V-neck top is multifunctional thanks to its different pockets including a hidden one.  
Center Back Length: 26 3/8"  
**XS-3XL**  
100% Brushed Cotton



**CORRAL MULTI  
617-PCM**

The V-Neck scrub top in its purest and simplest form allows the print to be the eye-catching element.  
Center Back Length: 26 3/8"  
**XS-5XL**  
100% Cotton



**LILY PAD FROGS  
617-LYP**

The V-Neck scrub top in its purest and simplest form allows the print to be the eye-catching element.  
Center Back Length: 26 3/8"  
**XS-5XL**  
100% Brushed Cotton



**FREEDOM FLUTTER  
722-FDF**

This slim-fitting White Cross print top, with its curved stretch-knit side panels and Knit V-neck keeps you in your comfort zone.  
Center Back Length: 26 1/4"  
**XS-3XL**  
100% Brushed Cotton



**LEMON ZEST  
718-LZT**

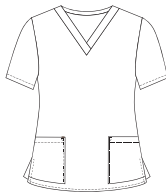
Classic and comfortable, this top is your new piece and a must have addition for your wardrobe.  
Center Back Length: 26 1/2"  
**XS-3XL**  
100% Brushed Cotton





**MEOW MIX-BLACK  
617-MWB**

The V-Neck scrub top in its purest and simplest form allows the print to be the eye-catching element.  
Center Back Length: 26 3/8"  
**XS-5XL**  
100% Brushed Cotton



**PINEAPPLE -MULTI  
617-PNM**

The V-Neck scrub top in its purest and simplest form allows the print to be the eye-catching element.  
Center Back Length: 26 3/8"  
**XS-5XL**  
100% Brushed Cotton



**PUPPY PATROL  
618-PYP**

This V-neck top is multifunctional thanks to its different pockets including a hidden one.  
Center Back Length: 26 3/8"  
**XS-3XL**  
100% Brushed Cotton



**BEST IN SHOW  
617-BSH**

The V-Neck scrub top in its purest and simplest form allows the print to be the eye-catching element.  
Center Back Length: 26 3/8"  
**XS-5XL**  
100% Cotton

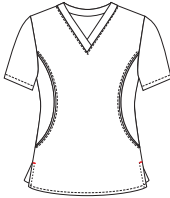


# FLORAL CANVAS



**FORGET ME NOT  
722-FMN**

This slim-fitting White Cross print top, with its curved stretch-knit side panels and Knit V-neck keeps you in your comfort zone.  
Center Back Length: 26 1/4"  
**XS-3XL**  
100% Brushed Cotton



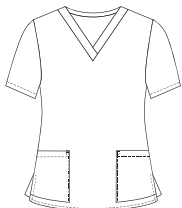
**AFTER THE RAIN  
755-AFR**

With its coverstitching details, show your personality and be professional, all at the same time.  
Center Back Length: 26 3/8"  
**XS-3XL**  
100% Sateen Cotton



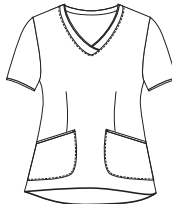
**PLAYFUL PETALS  
617-PFP**

The V-Neck scrub top in its purest and simplest form allows the print to be the eye-catching element.  
Center Back Length: 26 3/8"  
**XS-5XL**  
100% Brushed Cotton



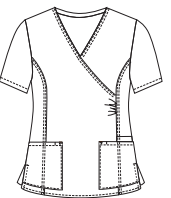
**GROWING UP  
735-GWP**

Attention to details with contrast piping, curved lines enhance the vibrancy of this print scrub top.  
Center Back Length: 28"  
**XS-3XL**  
100% Brushed Cotton



**FLUTTER BEAT  
791-FTB**

A draping effect with delicate gathering at the waist for a slimmer silhouette coupled with patch pockets for functionality.  
Center Back Length: 26 3/8"  
**XS-3XL**  
100% Brushed Cotton





# NOCTURNAL GARDEN



**FLORAL FLURRY  
717-FFY**

With its contrasting cross-over bands, this scrub top is a reminder of the kimono. You can feel zen even during a hard day's work.

Center Back Length: 26 3/8"

**XS-3XL**

STRETCH: 97% Cotton, 3% Spandex



**SPOTS OF FLORAL  
722-SPF**

This slim-fitting White Cross print top, with its curved stretch-knit side panels and Knit V-neck keeps you in your comfort zone.

Center Back Length: 26 1/4"

**XS-3XL**

100% Brushed Cotton



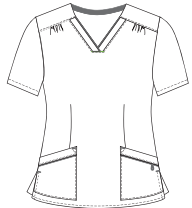
**SOFT EMBRACE  
756-SEM**

With a contrast detail on the neckline and pockets, this is all this print top needs to be fashionable and adds a naturally feminine touch.

Center Back Length: 26 3/8"

**XS-3XL**

100% Brushed Cotton



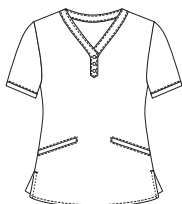
**VIOLA PINKS  
701-VLP**

A contrast neckline and Henley-style button detail complement this V-Neck Print Scrub Top. This modern look is completed by a flattering back elastic and angled pockets.

Center Back Length: 26 3/8"

**XS-3XL**

100% Brushed Cotton



**BUTTERFLY APPLIQUÉ  
718-BAQ**

Delicate shirring at the V-neck of this scrub top and an elasticised back make it all the more feminine.

Center Back Length: 25 7/8"

**XS-3XL**

100% Cotton



**FLUTTER MOMENT  
718-FMM**

Delicate shirring at the V-neck of this scrub top and an elasticised back make it all the more feminine.

Center Back Length: 25 7/8"

**XS-3XL**

100% Brushed Cotton



# NATURAL BEAUTY



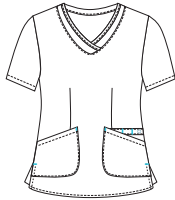
**DELPHINE  
726-DPH**

For combinations of colors, we opt for this practical contrast top. The loop on the left pocket allows you to effectively organize your work accessories.

Center Back Length: 26"

**XS-3XL**

100% Brushed Cotton



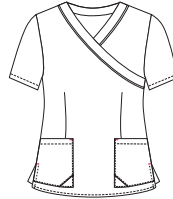
**WILD MIX  
745-WDM**

Originality is paired with charm when it is subtle. You will just need a piece of fabric to remind you the color of the pattern or a contrasting piece to enhance your style.

Center Back Length: 26 1/8"

**XS-3XL**

100% Brushed Cotton



**FUJI-BLACK  
701-FJB**

A contrast neckline and Henley-style button detail compliment this V-Neck Print Scrub Top. This modern look is completed by a flattering back elastic and angled pockets.

Center Back Length: 26 3/8"

**XS-3XL**

100% Brushed Cotton



**DRIFTING MELODY  
742-DML**

A lot happens in a day; this does not need to be the case with what you wear.

Center Back Length: 26 3/8"

**XS-3XL**

100% Brushed Cotton



**INTO THE COLORS-GREY  
742-TCG**

A lot happens in a day; this does not need to be the case with what you wear.

Center Back Length: 26 3/8"

**XS-3XL**

100% Brushed Cotton



**SI BELLE  
706-SBE**

The gathering details at the shoulders and pockets add femininity and youthfulness to this V-neck top. On the practical side, the gathering allows you to put more essentials in your pockets!

Center Back Length: 26 5/8"

**XS-3XL**

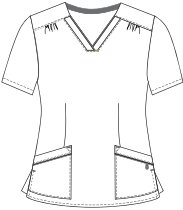
STRETCH: 92% Polyester, 8% Spandex



# SOMETHING BLUE



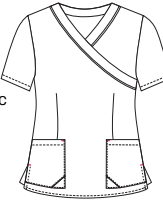
**TWILIGHT BLOSSOM**  
**756-TWB**  
With a contrast detail on the neckline and pockets. This is all this print top needs to be fashionable. A naturally feminine touch.  
Center Back Length: 26 3/8"  
**XS-3XL**  
100% Sateen Cotton



**DENIM FOREVER**  
**735-DFV**  
Attention to details with contrast piping, curved lines enhance the vibrancy of this print scrub top.  
Center Back Length: 28"



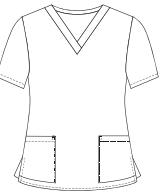
**BLUE MOTION**  
**745-BMT**  
Originality is paired with charm when it is subtle. You will just need a piece of fabric to remind you the color of the pattern or a contrasting piece to enhance your style.  
Center Back Length: 26 1/8"  
**XS-3XL**  
100% Brushed Cotton



**ZIGZAG FLOW**  
**718-ZZF**  
Delicate shirring at the V-neck of this scrub top and an elasticised back make it all the more feminine.  
Center Back Length: 25 7/8"  
**XS-3XL**  
100% Brushed Cotton



**ILLUMINATION**  
**617-LMT**  
The V-Neck scrub top in its purest and simplest form allows the print to be the eye-catching element.  
Center Back Length: 26 3/8"  
**XS-5XL**  
100% Cotton



**ILLUMINATION**  
**904-LMT**  
Warm up or roll up your sleeves with this comfy, jewel-neck cardigan style jacket.  
Center Back Length: 29 1/4"  
**XS-5XL**  
100% Cotton



**CHERRY BOUQUET**  
**617-CYB**  
The V-Neck scrub top in its purest and simplest form allows the print to be the eye-catching element.  
Center Back Length: 26 3/8"



**CHERRY BOUQUET**  
**904-CYB**  
Warm up or roll up your sleeves with this comfy, jewel-neck practical cardigan style jacket.  
Center Back Length: 29 1/4"  
**XS-5XL**  
55% Cotton, 45% Polyester, Brushed



# LAB COAT





# LAB COAT WHITE CROSS | FIT



### 2417

A modern lab coat with a touch of style. This is an essential piece to your professional wardrobe.  
Center Back Length: 32"

### XXS-2XL

90% Polyester, 10% Spandex

AVAILABLE IN

**BLA-BLACK**

WHI-WHITE



# LAB COAT Marvella



## 2418

Fitted at the waist and with stretch fabric, this tailored lab coat will have you moving freely and effortlessly throughout your work day!

Center Back Length: 32"

**XXS-2XL**

62% Polyester, 34% Rayon, 4% Spandex

AVAILABLE IN WHITE ONLY



## 2479

This ¾ sleeve top is a balance between a lab coat and a jacket. The slight flared cut, longer in the back, gives a feminine touch.

Center Back Length: 29 1/2"

**XXS-2XL**

62% Polyester, 34% Rayon, 4% Spandex

AVAILABLE IN

**BLA-BLACK**

WHI-WHITE



## 2817

A modern lab coat with a touch of style. This is an essential piece to your professional wardrobe.

Center Back Length: 29"

**XXS-2XL**

62% Polyester, 34% Rayon, 4% Spandex

AVAILABLE IN

**BLA-BLACK**

WHI-WHITE



# LAB COAT



## 2497

Playful with its contrast stitching with a casual look and feel, fit and function remain part of the equation for this lab coat.

Center Back Length: 32"

**XXS-3XL**

62% Cotton, 36% Polyester, 2% Spandex

AVAILABLE IN

■ BLA □ WHI

# ALLURE



## 2411/2411X

It's about what's essential: multiple, large pockets.

Center Back Length: 32 1/2"

**XXS-5XL**

65% Polyester, 35% Cotton Poplin

AVAILABLE IN WHITE ONLY



# UNISEX LAB COAT



## 2068

The iconic lab coat, be it for science students, artists and professional, it is a staple.

Center Back Length: 38"

**XS-2XL**

65% Polyester, 35% Cotton

AVAILABLE IN WHITE ONLY

## 2068S

Snap into it and snap out of it! The indispensable classic lab coat with snaps.

Center Back Length: 42"

**3XS-3XL**

65% Polyester, 35% Cotton

AVAILABLE IN WHITE ONLY





SNAPS  
RIB  
CUFF

**2068SRB**

The knit cuffs add that extra protection at work to this iconic lab coat.

Center Back Length: 42"

**XXS-3XL**

65% Polyester, 35% Cotton

AVAILABLE IN WHITE ONLY

[WWW.WHITECROSS.CA](http://WWW.WHITECROSS.CA)

# DRESSES



**8014/8014X**  
Pleated mock wrap dress with patch pockets and cell phone pocket. Spaghetti tie back belt.  
Regular - 38 5/8" length  
Plus size - 41 1/4" length  
**XXS-5XL**  
65% Polyester, 35% Cotton Poplin

AVAILABLE IN WHITE ONLY



**8011/8011X**  
Mock wrap A-line scrub dress with set-in waist band and sash tie back belt. Set-in sleeves and pleated front patch pockets.  
Regular - 38 5/8" length  
Plus size - 41 1/4" length  
**XXS-5XL**  
65% Polyester, 35% Cotton Poplin

AVAILABLE IN  
 NAV  WHI



# Marvella



## 1019/1019X Marvella

Long sleeved button down dress with embroidered double collar. Fabric tabs with button detail at back. Extra button included.

Regular - 44 3/8" length

Plus size - 44 5/8" length

**6-20, 40-54**

MARVELLA - 62% Polyester, 34% Rayon, 4% Spandex

AVAILABLE IN  
 WHI  BLA

## 9021 Marvella

Two piece dress set. Sleeveless dress with a cross embroidery along neckline and back zipper. Collared button front jacket.

Regular - 43 3/4" length

Plus size - 45 1/8" length

**4-20, 40-54**

MARVELLA - 62% Polyester, 34% Rayon, 4% Spandex

AVAILABLE IN WHITE ONLY



## 9779/9779W Marvella

Two piece skirt set featuring high-low top.

The top is a button front 3/4 sleeve with curved pockets and jewel neckline. Skirt with back kick pleat.

Top Regular - 29 3/4" length

Top Plus size - 30 1/2" length

Skirt Regular - 30" length

Skirt Plus size - 31 1/2" length

**4-20, 16W-28W**

MARVELLA - 62% Polyester, 34% Rayon, 4% Spandex

# DUO SCRUBS



## 2262

The classic elements of simplicity and practicality crafted into a functional top.

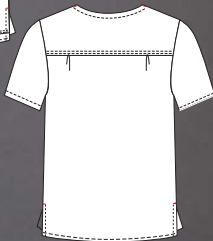
Center Back Length: 30 1/8"

**XS-3XL**

65% Polyester, 35% Cotton

AVAILABLE IN

■ BLA ■ NAV ■ PWT ■ CEILB  
■ BUR ■ WHI ■ ROY ■ GRE



## 644

Here's to making the functional basic scrub to even more functional...

and more comfortable, with its knit v-neck band.

Center Back Length: 26 1/4"

**XXS-4XL**

65% Polyester, 35% Cotton

AVAILABLE IN

■ BLA ■ NAV ■ PWT ■ CEILB  
■ BUR ■ WHI ■ ROY ■ GRE





**228**

Constructed from White Cross' Performance Poplin, this is the men's cargo pant that delivers Durability, Fit and Function. Inseam: 33" Inseam  
**XS-3XL**  
 65% Polyester, 35% Cotton

AVAILABLE IN

- BLA ■ NAV ■ PWT ■ CEILB
- BUR ■ WHI ■ ROY ■ GRE



**304**

The essential workwear pant; no distracting add-ons, it works with you. Inseam : 28 1/2"  
**XXS-4XL**  
 65% Polyester, 35% Cotton

AVAILABLE IN

- BLA ■ NAV ■ PWT ■ CEILB
- BUR ■ WHI ■ ROY ■ GRE



# ALPHABETICAL PRINT INDEX

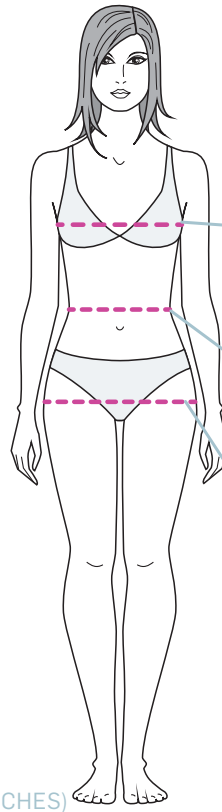
AFTER THE RAIN	755-AFR	64
BEST IN SHOW	617-BSH	63
BLOCK PARTY	745-BLP	18
BLUE MOTION	745-BMT	67
BUTTERFLY APPLIQUÉ	718-BAQ	65
BUTTERFLY PRISM	618-BPM	62
CHERRY BOUQUET	617-CYB	67
CHERRY BOUQUET	904-CYB	67
CORRAL MULTI	617-PCM	62
DELPHINE	726-DPH	66
DENIM FOREVER	735-DFV	67
DRIFTING MELODY	742-DML	66
FELINE ILLUSION	799-FIN	60
FLAPPY FEET	618-FPF	61
FLORAL FLURRY	717-FFY	65
FLORAL PHILOSOPHY	745-FPY	60

FLUTTER BEAT	791-FTB	64
FLUTTER MOMENT	718-FMM	65
FORGET ME NOT	722-FMN	64
FREEDOM FLUTTER	722-FDF	62
FUJI-BLACK	701-FJB	66
GROWING UP	735-GWP	64
HAPPY PUMPKINS	618-HPM	61
HIGHLAND'S NOEL	618-HDN	61
ILLUMINATION	617-LMT	67
ILLUMINATION	904-LMT	67
INTO THE COLORS	618-TCN	60
INTO THE COLORS-GREY	742-TCG	66
LACY FLORAL	745-LCF	18
LEMON ZEST	718-LZT	62
LILY PAD FROGS	617-LYP	62
LOVE TRIANGLE	618-LTL	60
MEOW MIX-BLACK	617-MWB	63

MY GREY SPACE	2263-MGS	20
MY PINK SPACE	746-MPD	19
MY PURPLE SPACE	746-MPU	19
NOCTURNAL PALS	618-NLP	61
ORCHID PAISLEY	742-HPS	60
PALYFUL PETALS	617-PFP	64
PINEAPPLE	617-PNM	63
PINK'GUINS	618-PKG	61
PUPPY PATROL	618-PYP	63
PUPPYTOOTH	618-PYT	60
RIBBON 'N LACE	618-RNL	60
SI BELLE	706-SBE	66
SOFT EMBRACE	756-SEM	65
SPOTS OF FLORAL	722-SPF	65
TWILIGHT BLOSSOM	756-TWB	67
VIOLA PINKS	701-VLP	65
WILD MIX	745-WDM	66
ZIGZAG FLOW	718-ZZF	67



# FIND YOUR FIT



**BUST**  
Wrap the measuring tape somewhat loosely around the fullest part of your chest (at nipple level).

**WAIST**  
While standing straight, bend over to the front or side and make a note of where your body creases. This is your natural waist. It's the narrowest part of your torso, generally located between your rib cage and belly button.

**HIPS**  
Wrap the tape measure around the fullest part of your hips and buttocks. This is usually located 7 to 9 inches (17.8 to 22.9 cm) below your natural waist.

## STANDARD SIZE CHARTS (IN INCHES)

THE TABLES BELOW INDICATE WHAT SIZE A WOMAN WEARS IF HER MEASUREMENTS ARE:

### WOMEN

SIZES	XXS	XS	SM	MD	LG	XL	XXL	3X	4X	5X
<b>BUST</b>	32-33	33-34	35-36	37-39	40-43	44-47	48-49	50-52	53-54	56-58
<b>WAIST</b>	24-25	25-26	27-28	29-31	32-34	35-38	39-41	42-44	45-46	48-50
<b>HIPS</b>	34-35	35-36	37-38	39-41	42-45	46-49	50-51	52-54	55-56	58-60

### MEN / UNISEX

SIZES	XS	SM	MD	LG	XL	XXL	3X	4X	5X
<b>CHEST</b>	33-34	35-37	38-40	41-44	45-48	49-50	51-52	53-55	56-58
<b>WAIST</b>	24-26	27-28	29-31	32-34	35-38	39-41	42-44	45-47	48-50
<b>HIPS</b>	35-36	37-39	39-41	42-45	46-49	50-51	52-54	55-57	58-60



WHITECROSSSCRUBS



**WHITE CROSS**

WHITE CROSS / 9600 Meilleur #950, Montreal, Quebec H2N 2E3 Canada  
Toll-Free 1-800-909-9060 / Toll-Free Fax 1-866-673-2532 / [service@whitecross.ca](mailto:service@whitecross.ca)