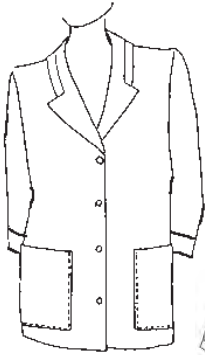


# LABCOATS



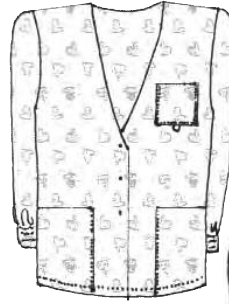
**2441 30" Length**  
XS-XXL

Shawl type collar with our "Dobbie Heart" inset, roll-up sleeve with "Dobbie Heart" trim. Back features crisscross "Dobbie Heart" belt detail.

Poplin with Dobbie Hearts Trim  
65% Polyester/35% Cotton  
Colors: White, Navy



Back Detail



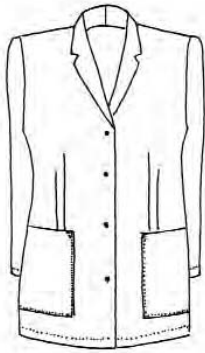
**929 DHT 29" Length**  
S-XXL

30" cardigan jacket with drawstring back and knit cuff sleeves, breast pocket with badge loop.

Dobbie Heart Poplin  
65% Cotton/35% Polyester  
Colors: White, Royal, Ceil Blue, Navy, Pink



Back Detail



**2468 34" Length**  
Sizes: 4-18

Double dart front, back belt and notched shawl collar make this labcoat a must for the sophisticated health care worker.

Luxury Twill:  
65% Polyester/35% Cotton  
Colors: White



Back Detail



**2442 30" Length**  
XS-XXL

Poplin with Dobbie Pink ribbon trim

Poplin: 65% Polyester/35% Cotton  
Colors: White



Back Detail



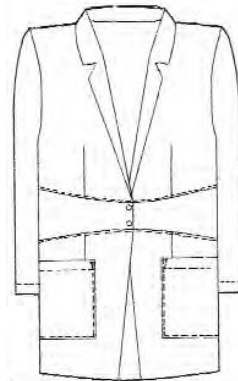
**2439 30" Length**  
S-XXL

Shawl type collar with inset, back features crisscross belt detail.

Poplin: 65% Polyester/35% Cotton  
Colors: White

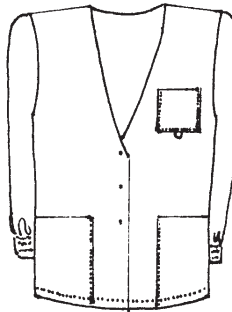


Back Detail



**2500 31" Length**  
XS-XXL

Poplin: 65% Polyester/35% Cotton  
Colors: White



**929 30" Length**  
XS-XXL

30" cardigan jacket with drawstring back and knit cuff sleeves, breast pocket with badge loop.

Poplin: 65% Polyester/35% Cotton  
Colors: White



Back Detail



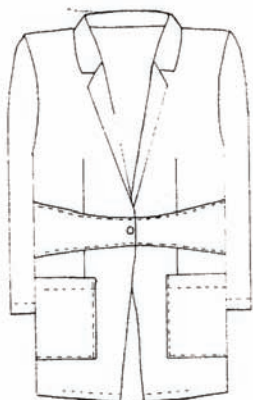
**906 XS-XXL**

Front Zip Warm-up Jacket

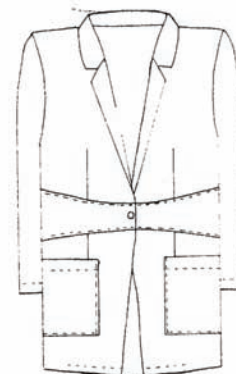
Fleece  
50% Polyester/50% Cotton  
Colors: White  
Double Trim



# Sarraus / Labwear "Nouvella"



2400  
Nouvella, 80/20 Poly-acrylique  
Blanc/White  
XS-XXL



2486  
Nouvella, 80/20 Poly-acrylique  
Blanc/White  
XS-XXL



2403  
Nouvella, 80/20 Poly-acrylique  
Blanc/White  
XS-XXL

